

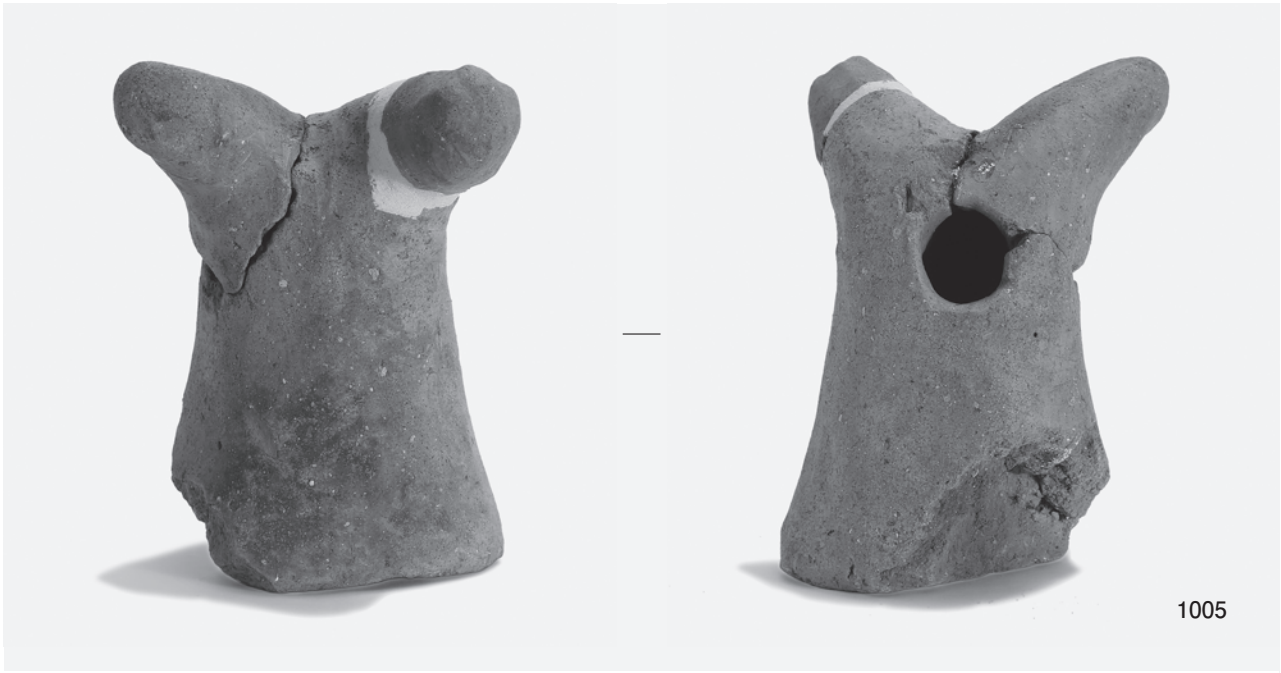
1 3区第2層出土土器 (5)



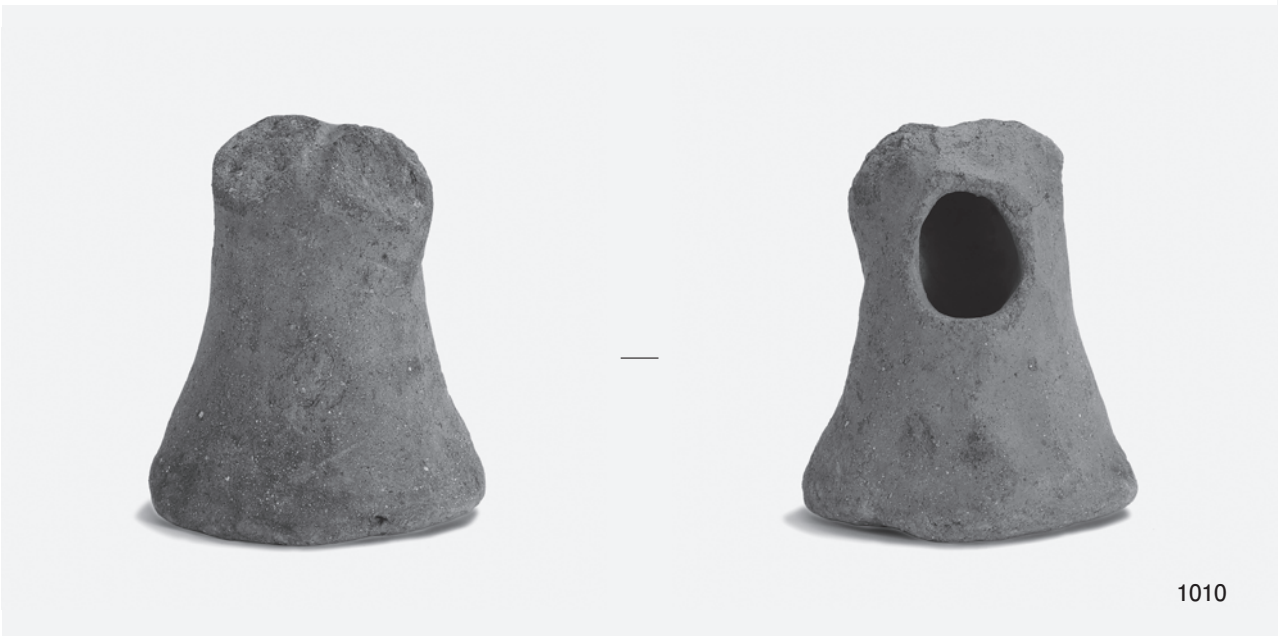
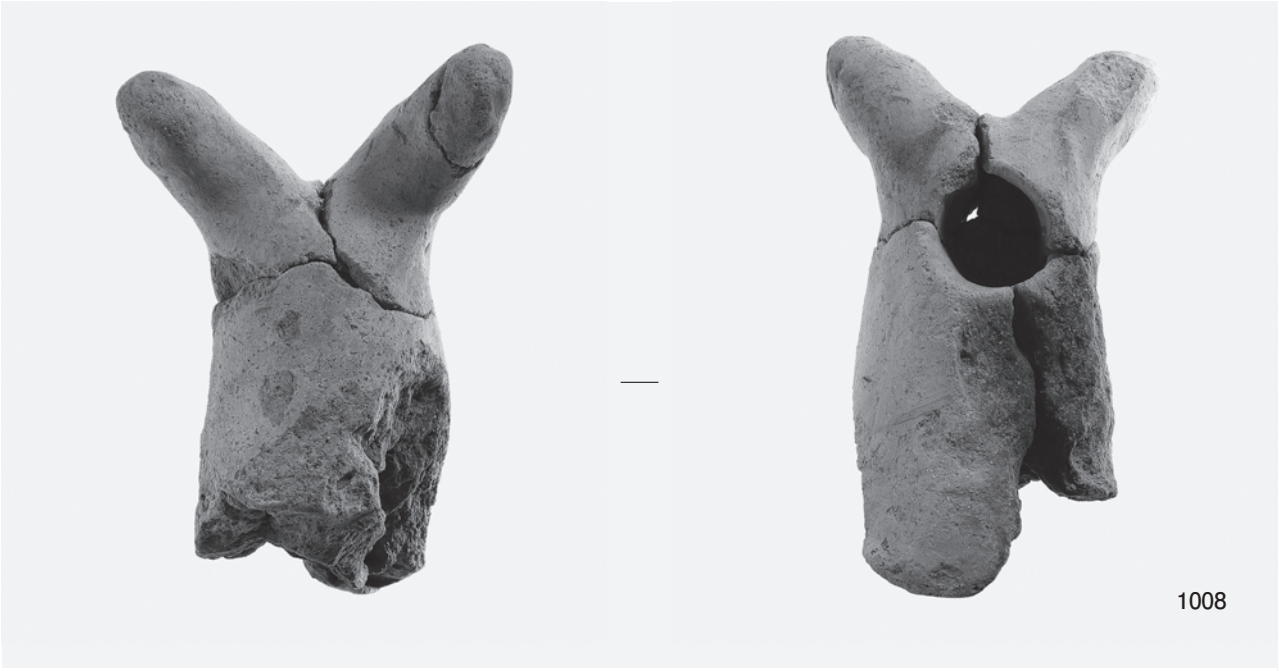
2 土玉・土製紡錘車・不明土製品



移動式竈



土製支脚 (1)



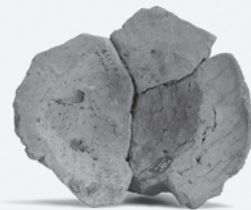
土製支脚 (2)



1011



1015



1014

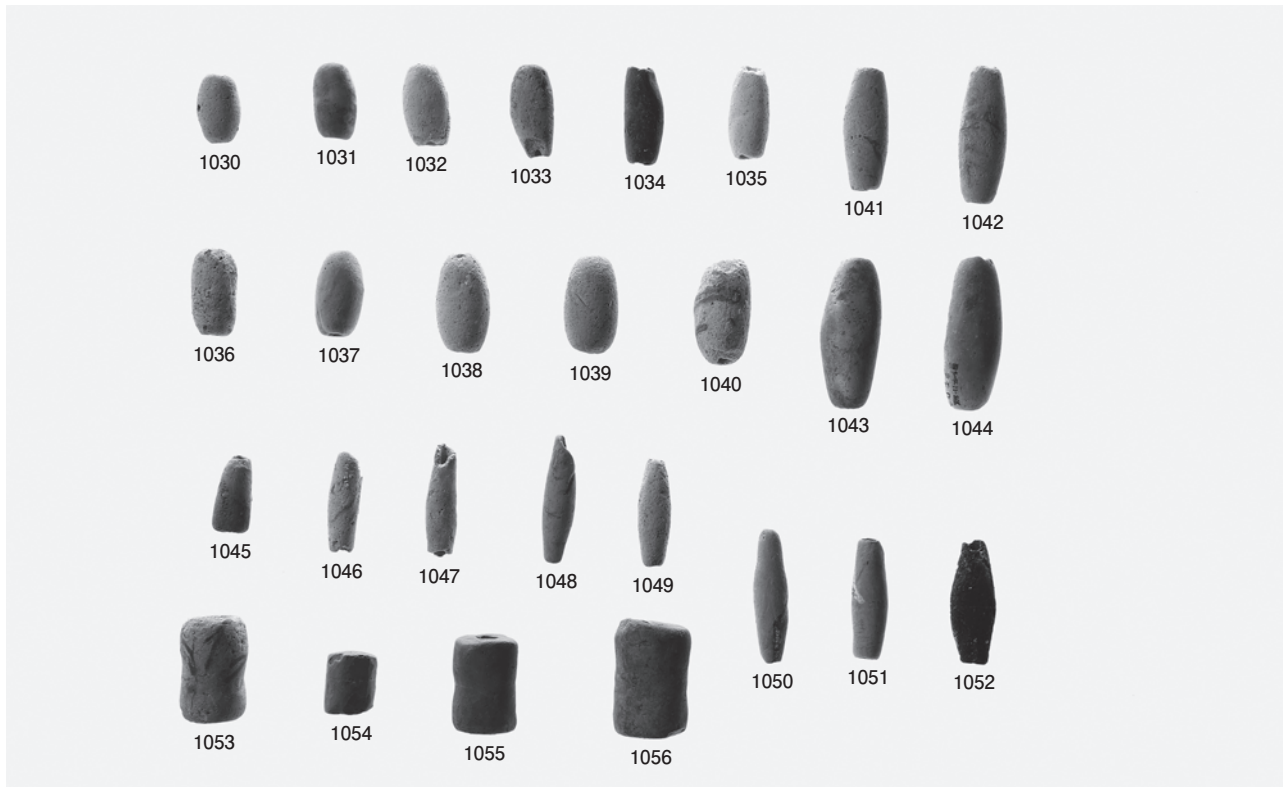


1013

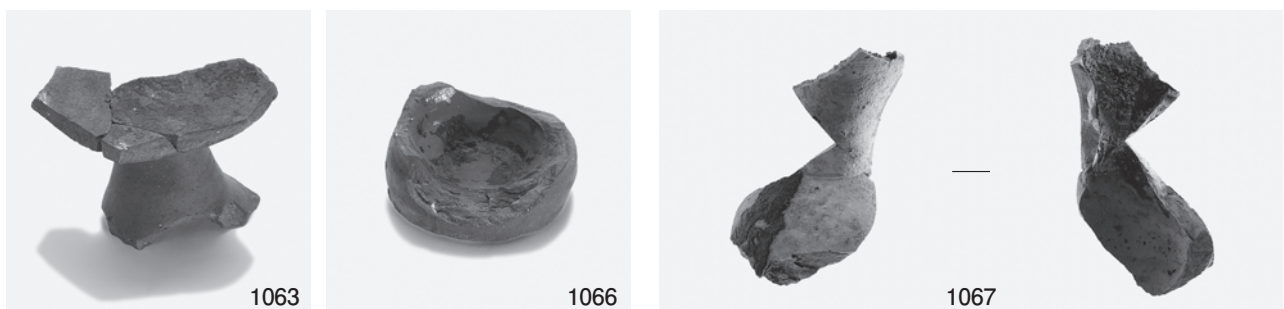
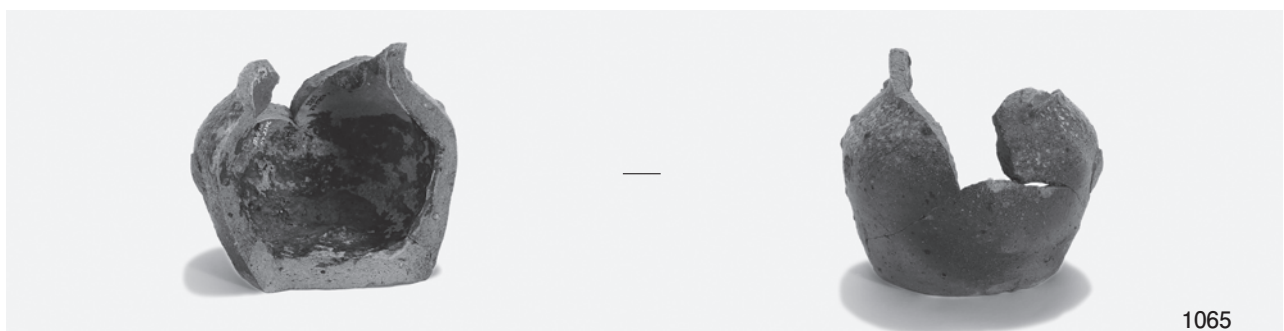
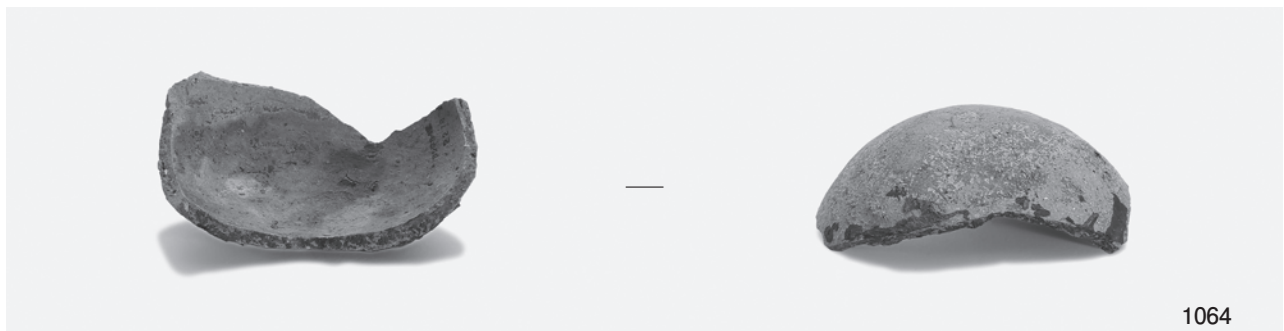


1016

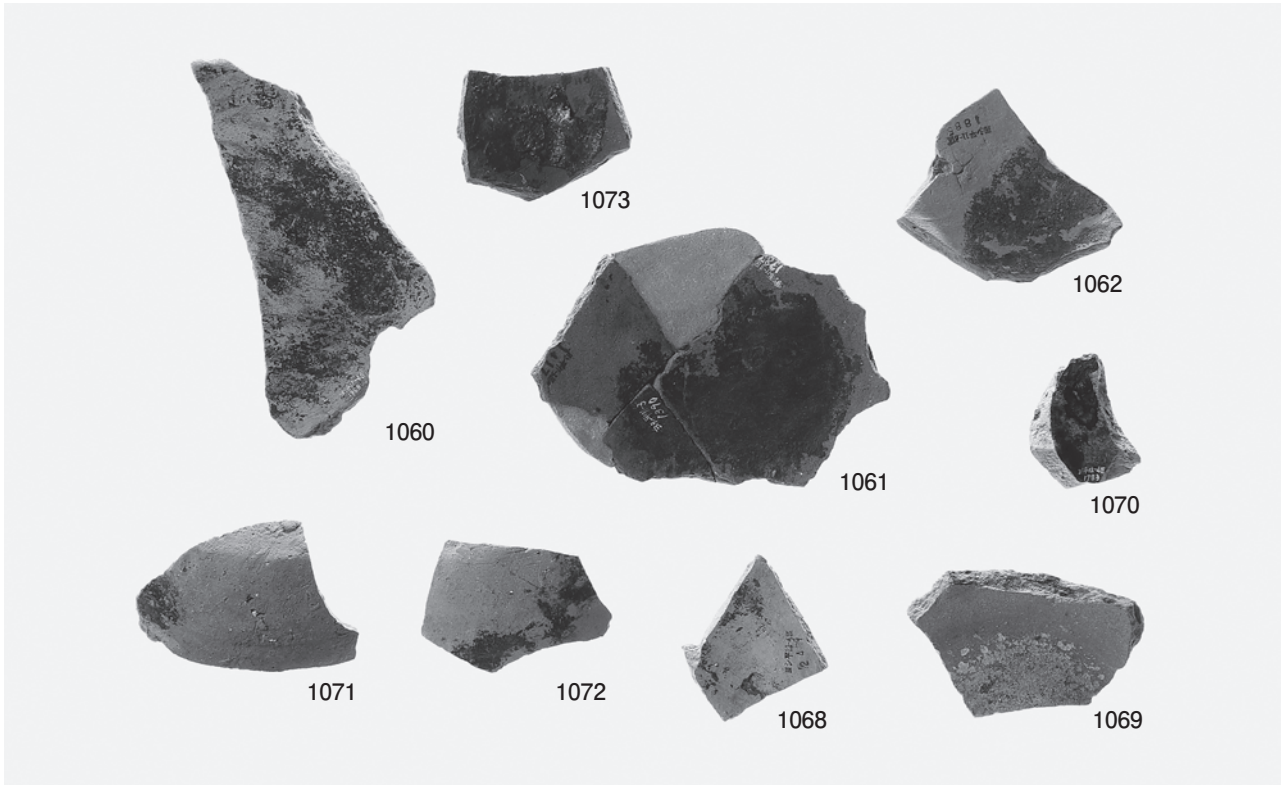
土製支脚 (3)



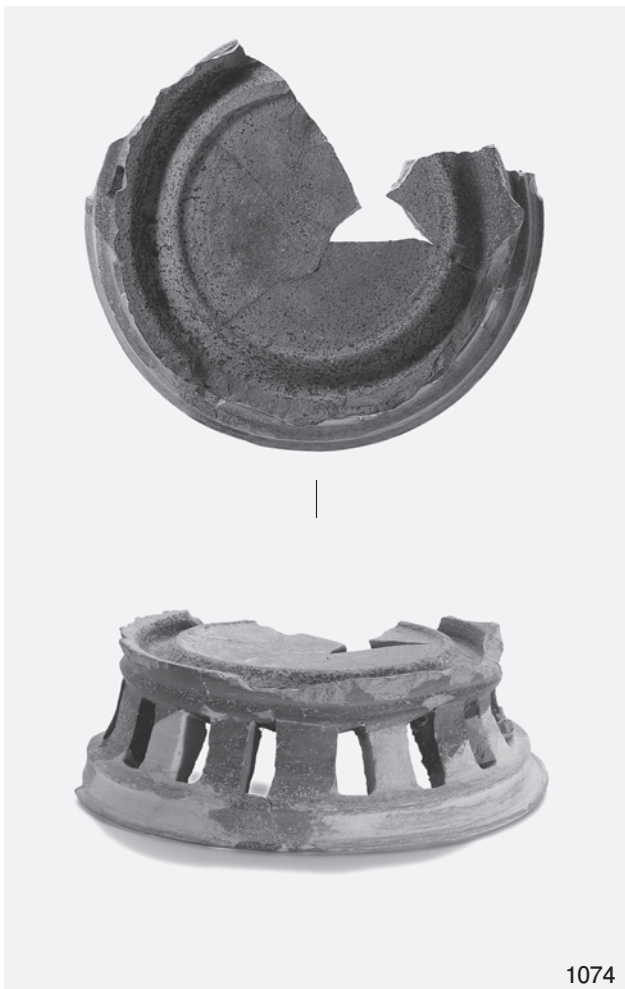
1 土錘



2 漆附着土器 (1)



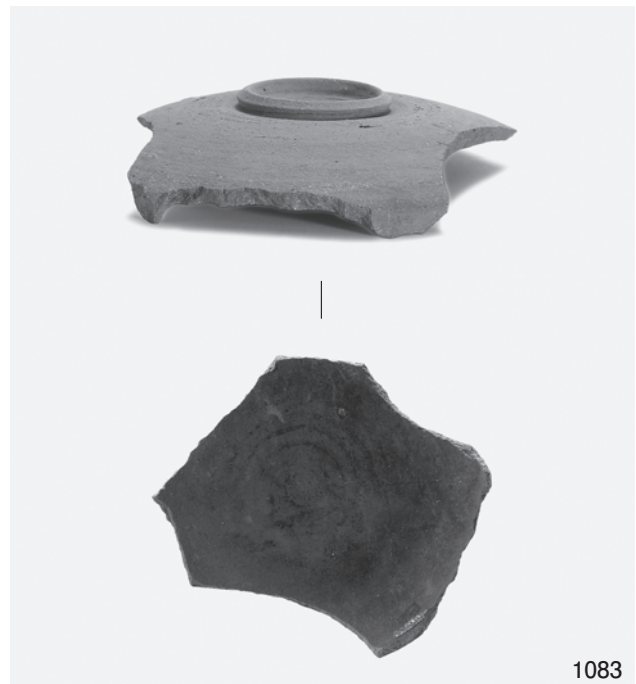
1 漆付着土器 (2)



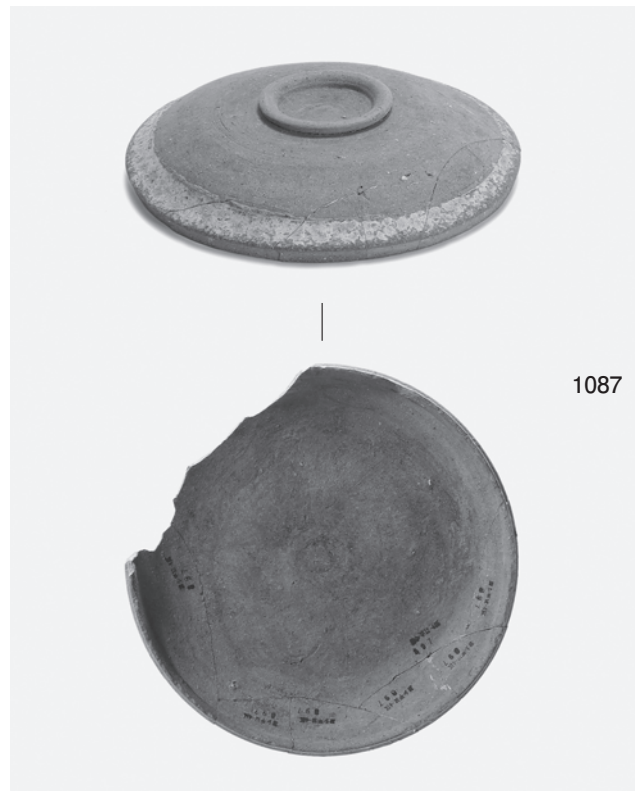
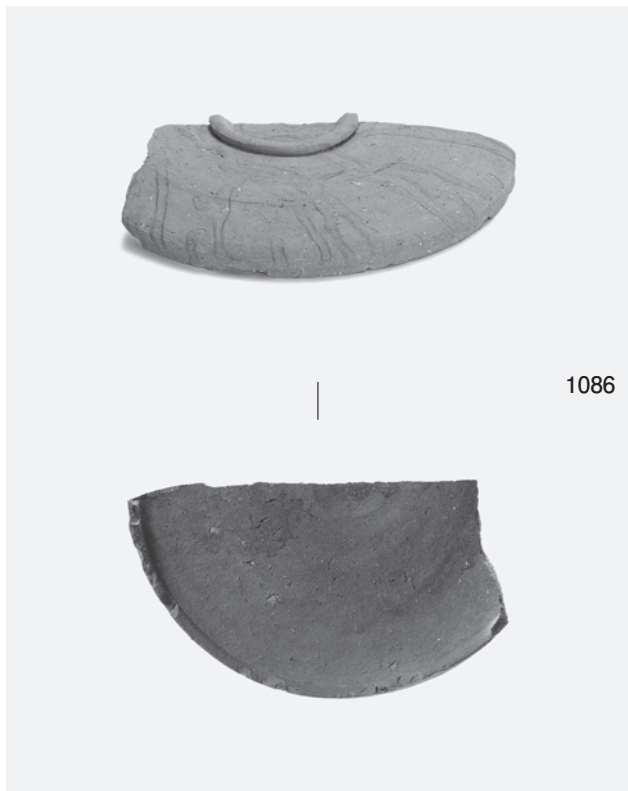
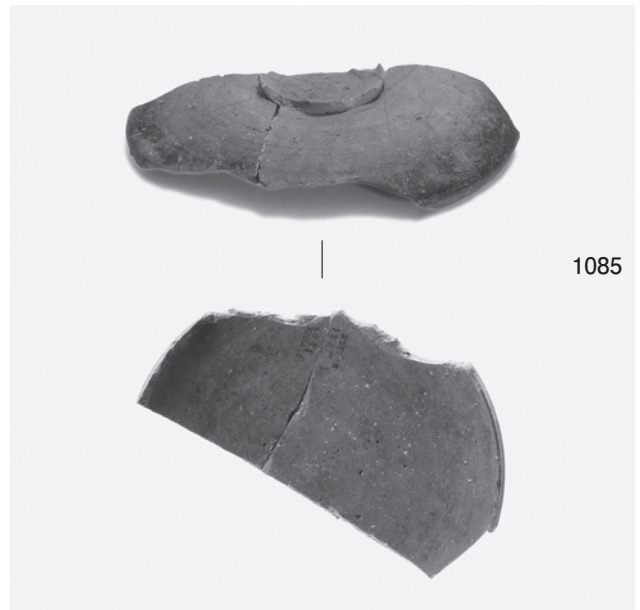
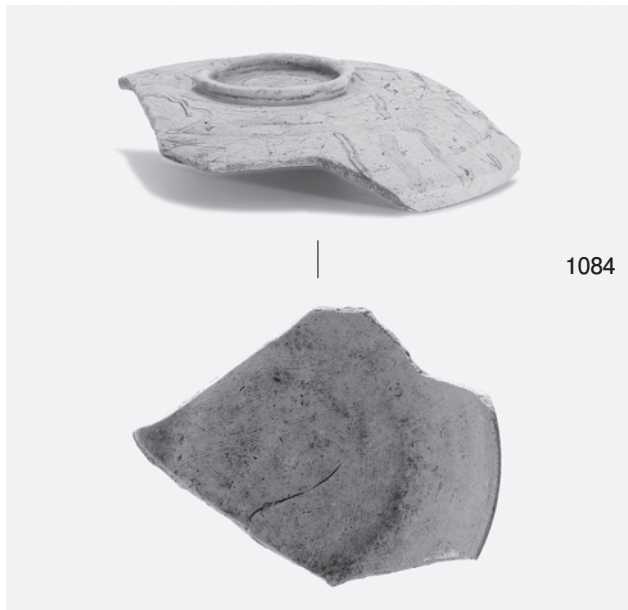
2 円面硯



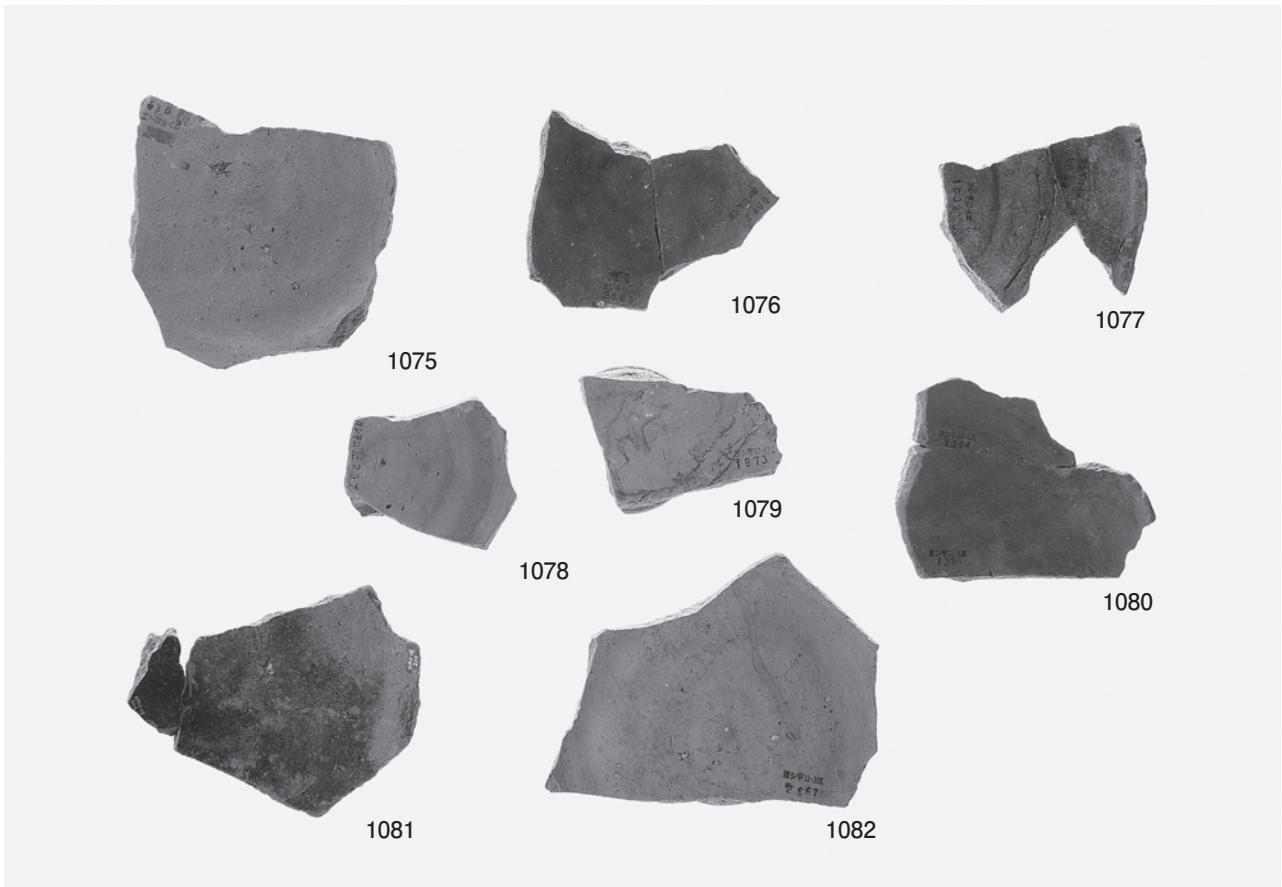
3 土製勾玉



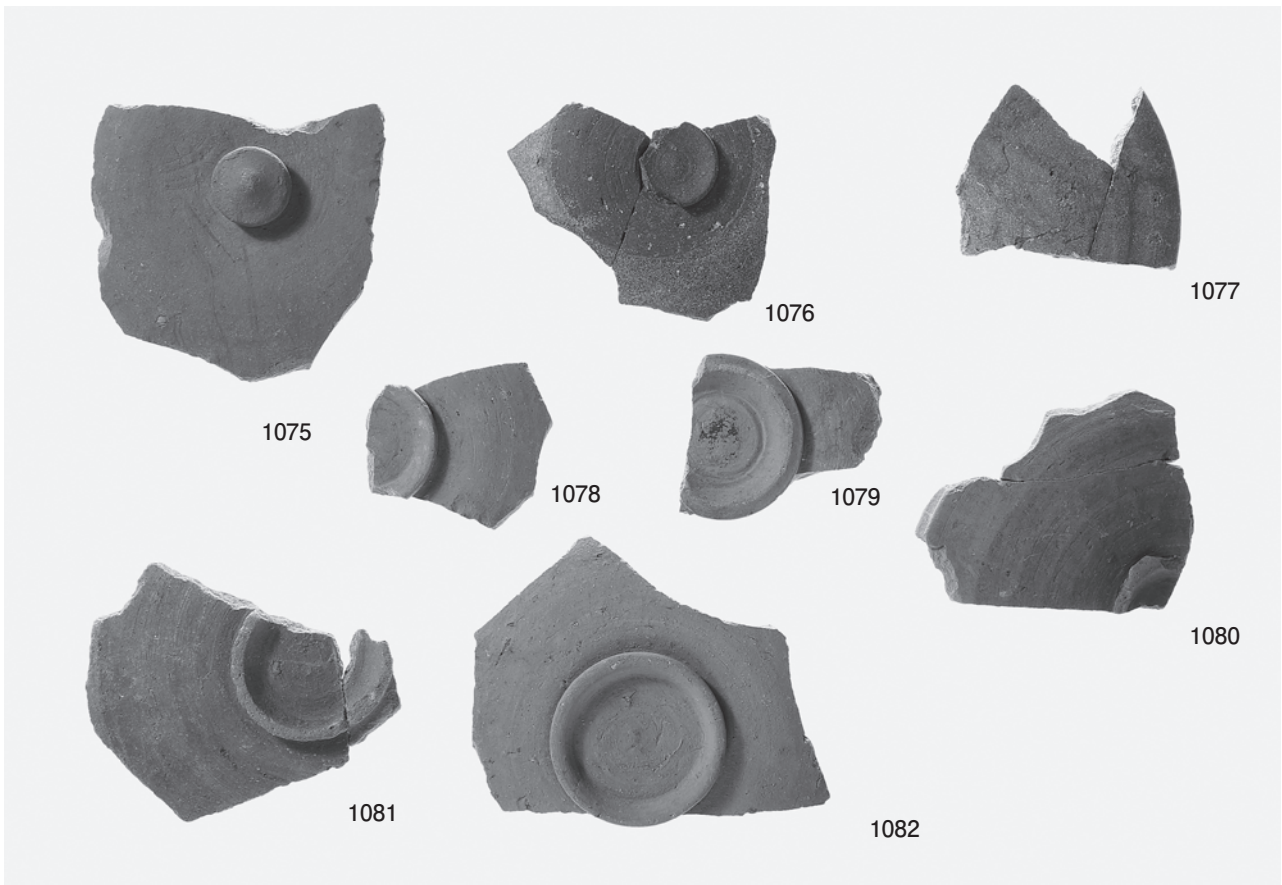
4 転用硯 (1)



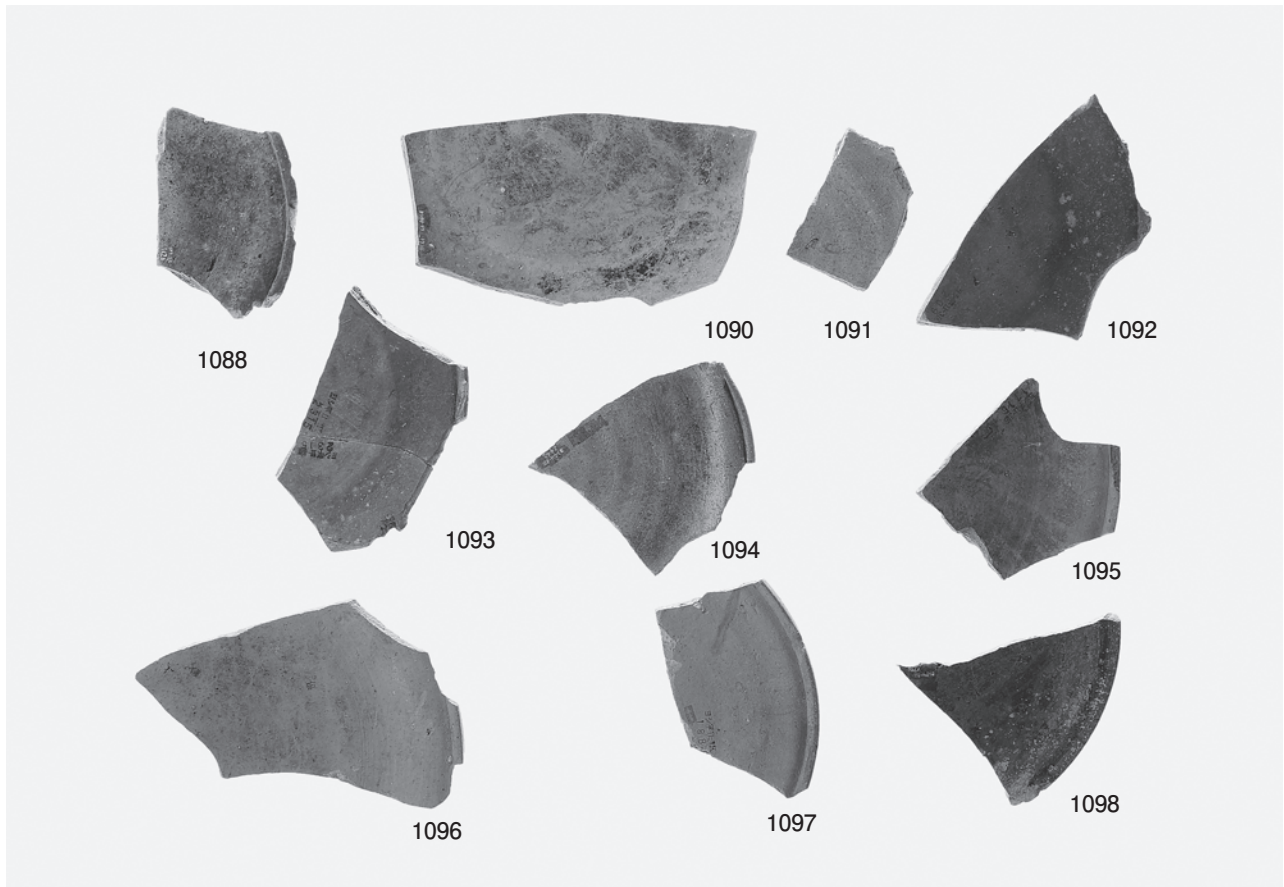
転用硯 (2)



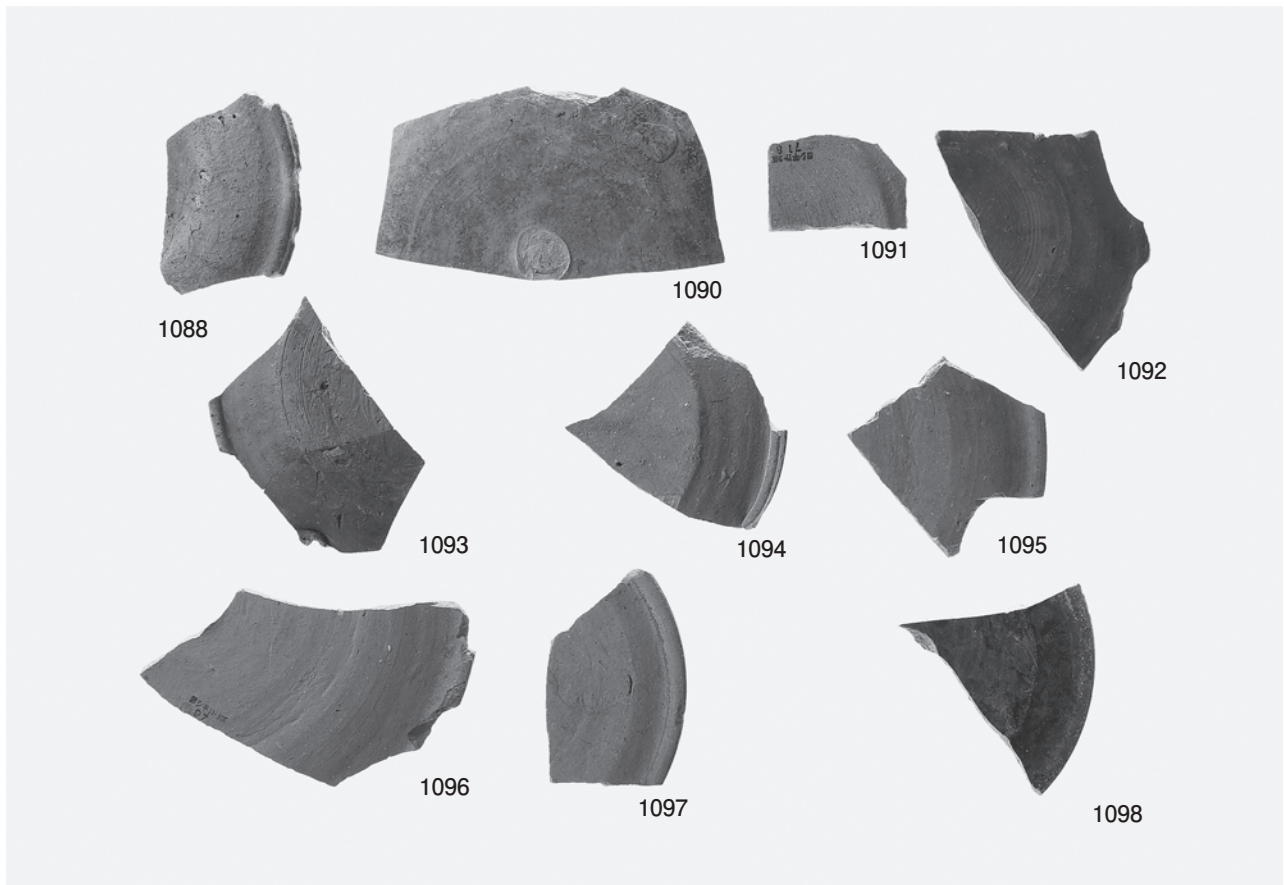
1 転用硯 (3) 内面 (硯面)



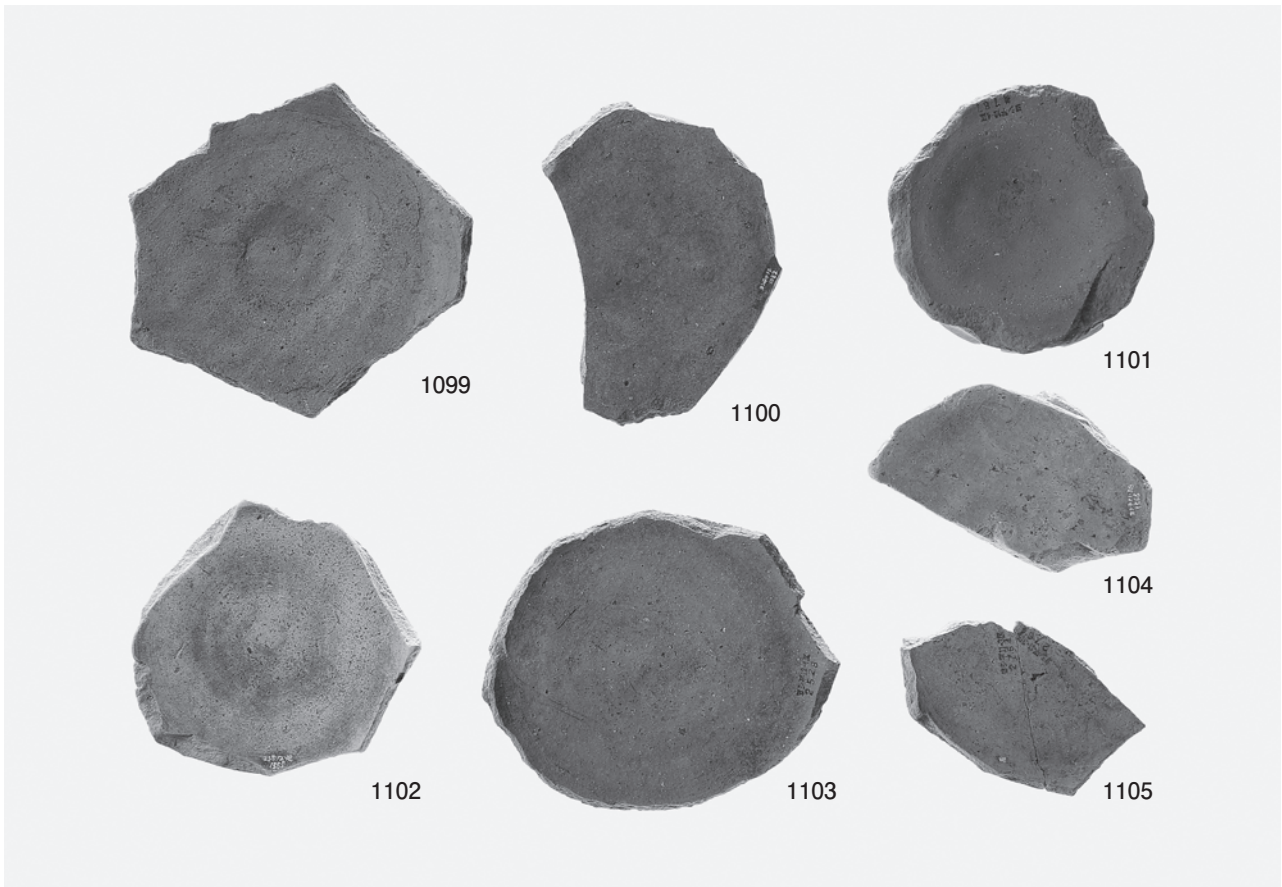
2 転用硯 (3) 外面



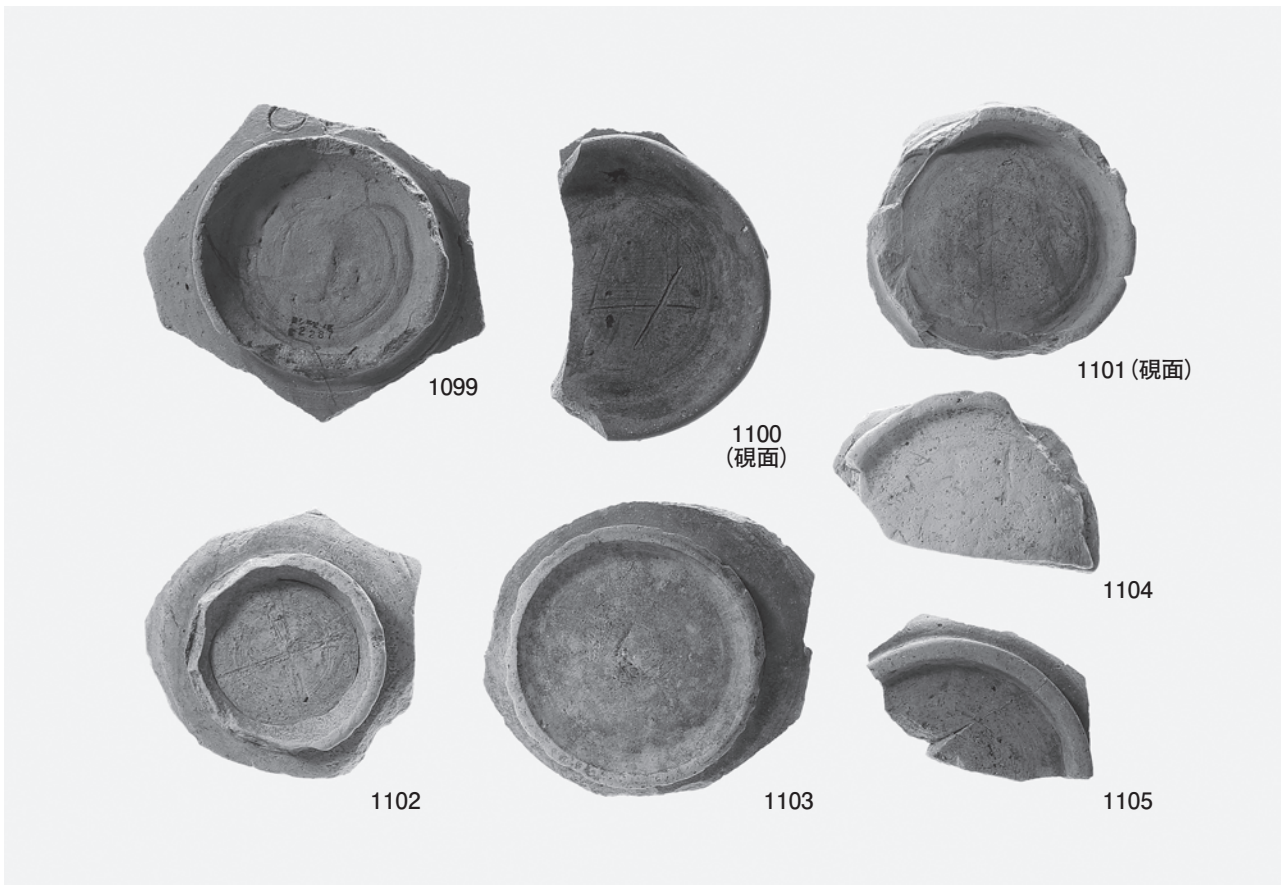
1 転用硯 (4) 内面 (硯面)



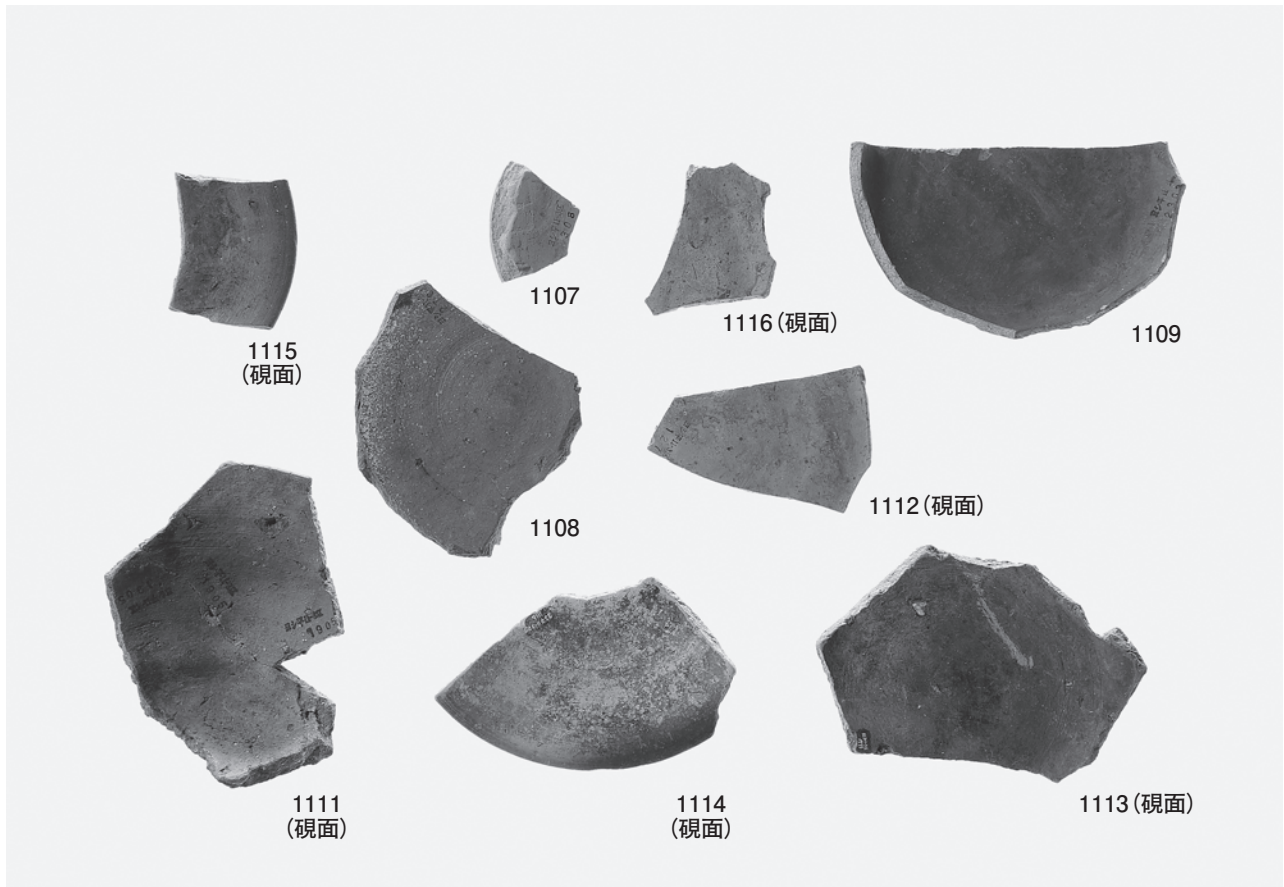
2 転用硯 (4) 外面



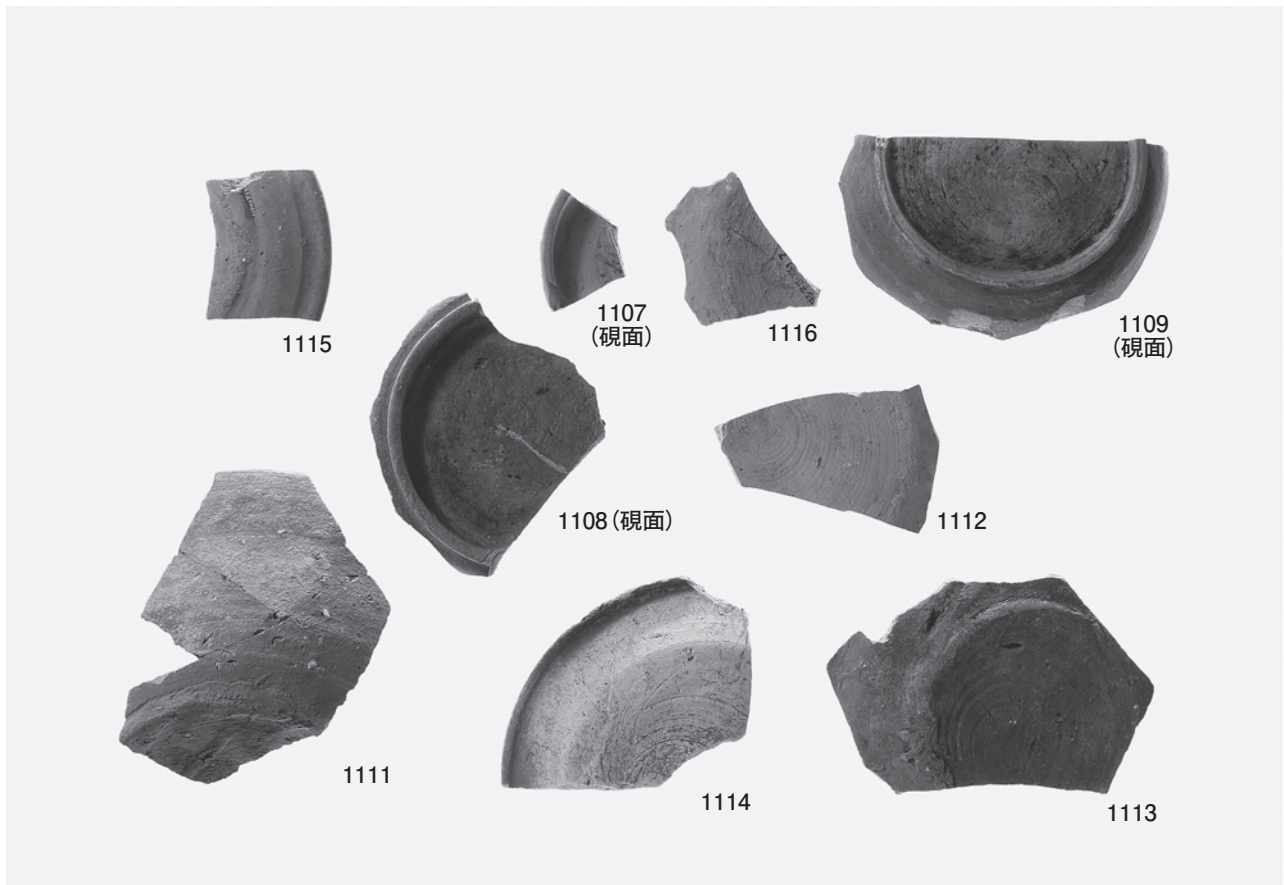
1 転用硯 (5) 内面 (硯面)



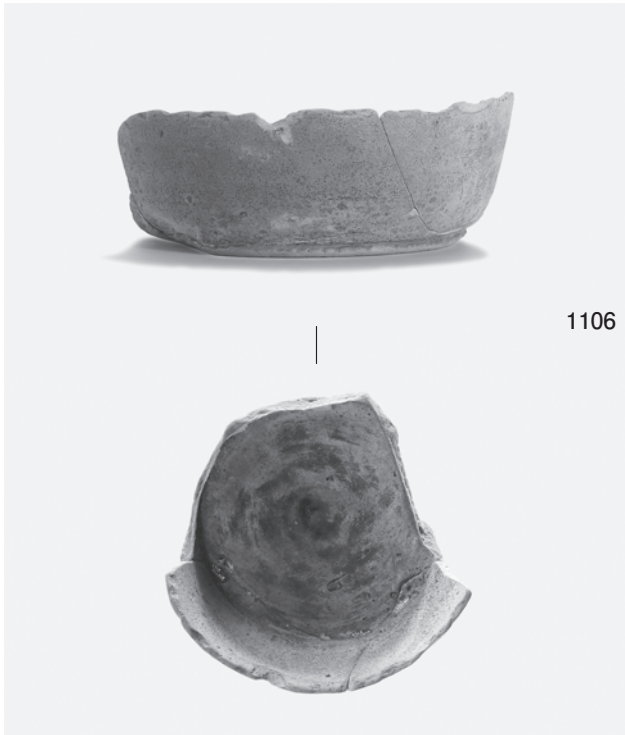
2 転用硯 (5) 外面



1 転用硯 (6) 内面



2 転用硯 (6) 外面



1106

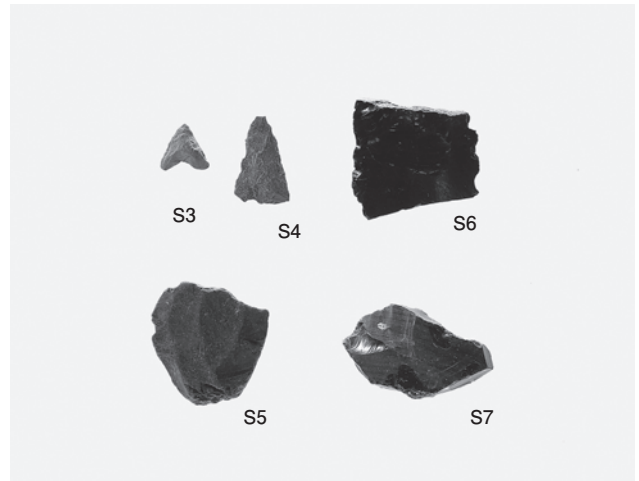


1110

1 転用硯 (7)



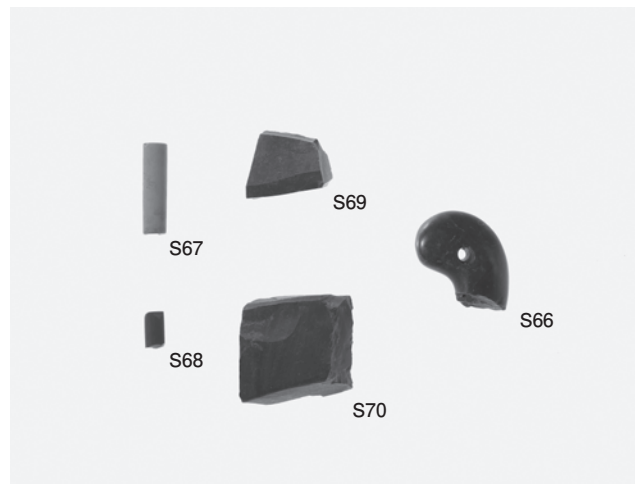
2 石器 (1) 磨製石斧



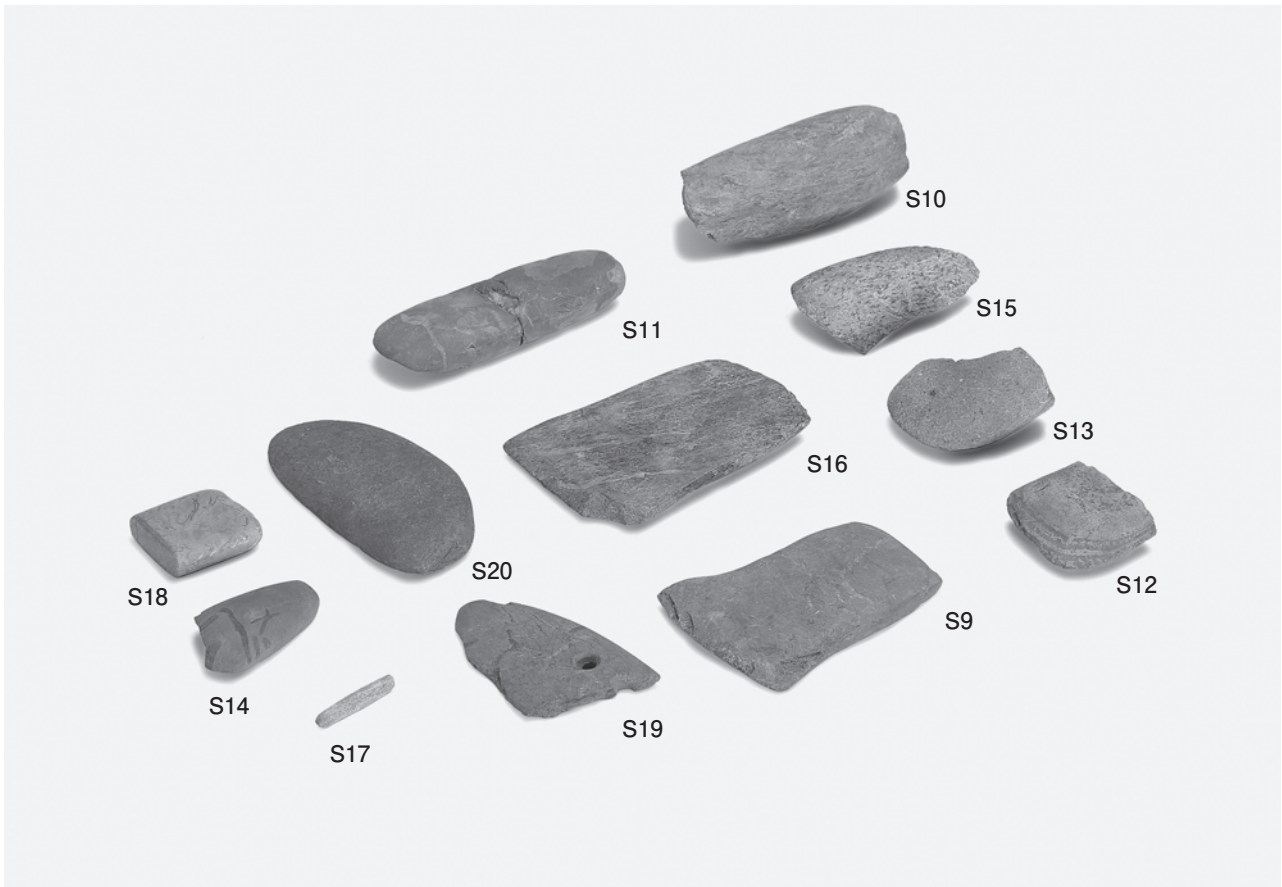
3 石器 (2) 石鏃・石核・剥片



4 石器 (3) 石鏃



5 石器 (4) 管玉・勾玉・玉作関連資料



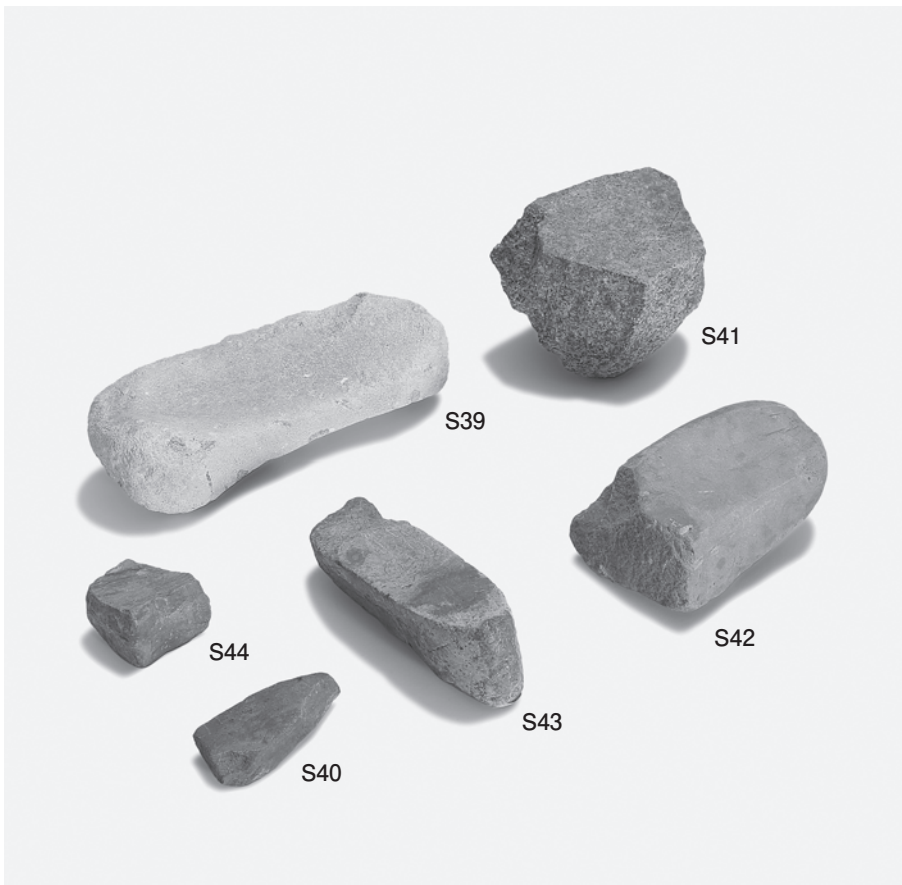
1 石器 (5) 磨製石斧・石庖丁



2 石器 (6) 敲石・磨石



1 石器 (7) 砥石①



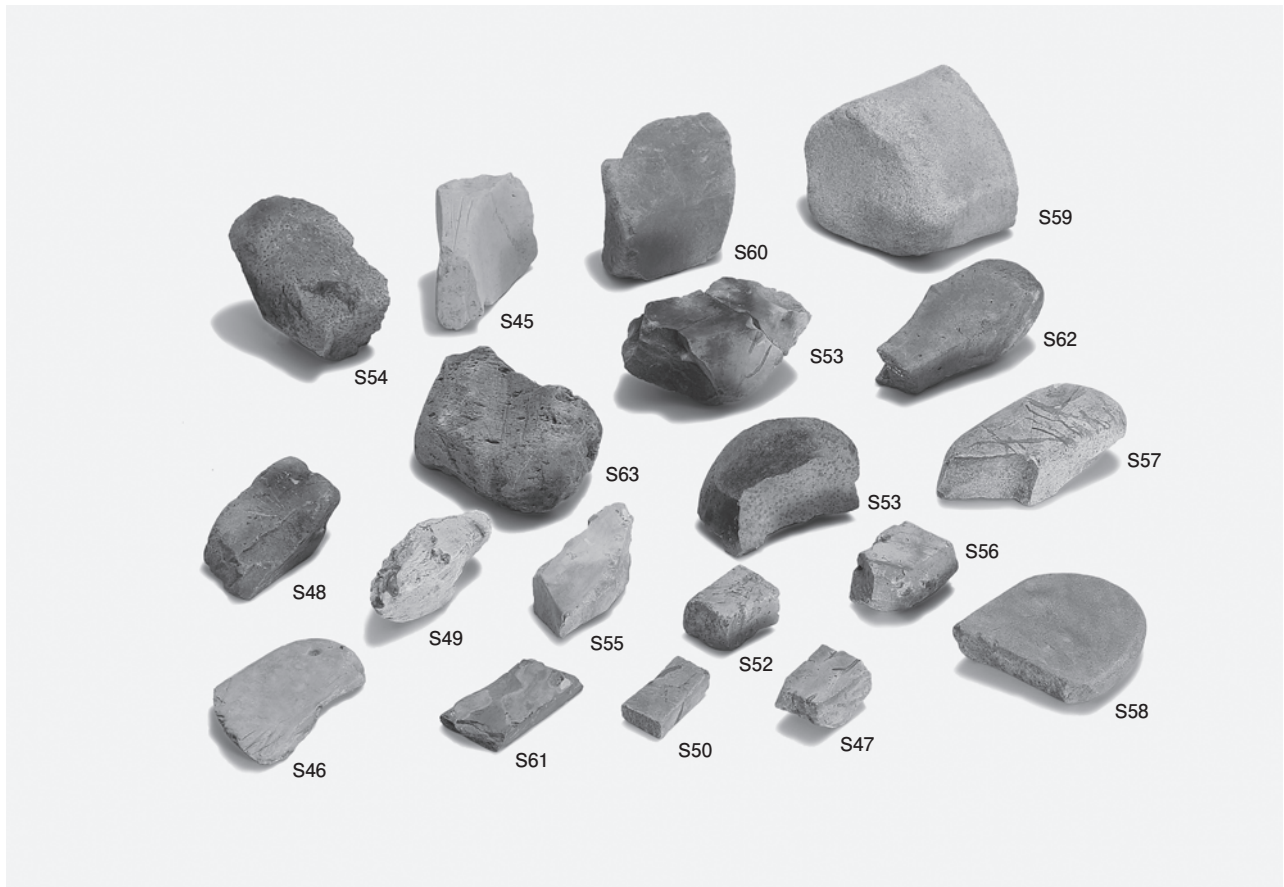
2 石器 (8) 砥石②



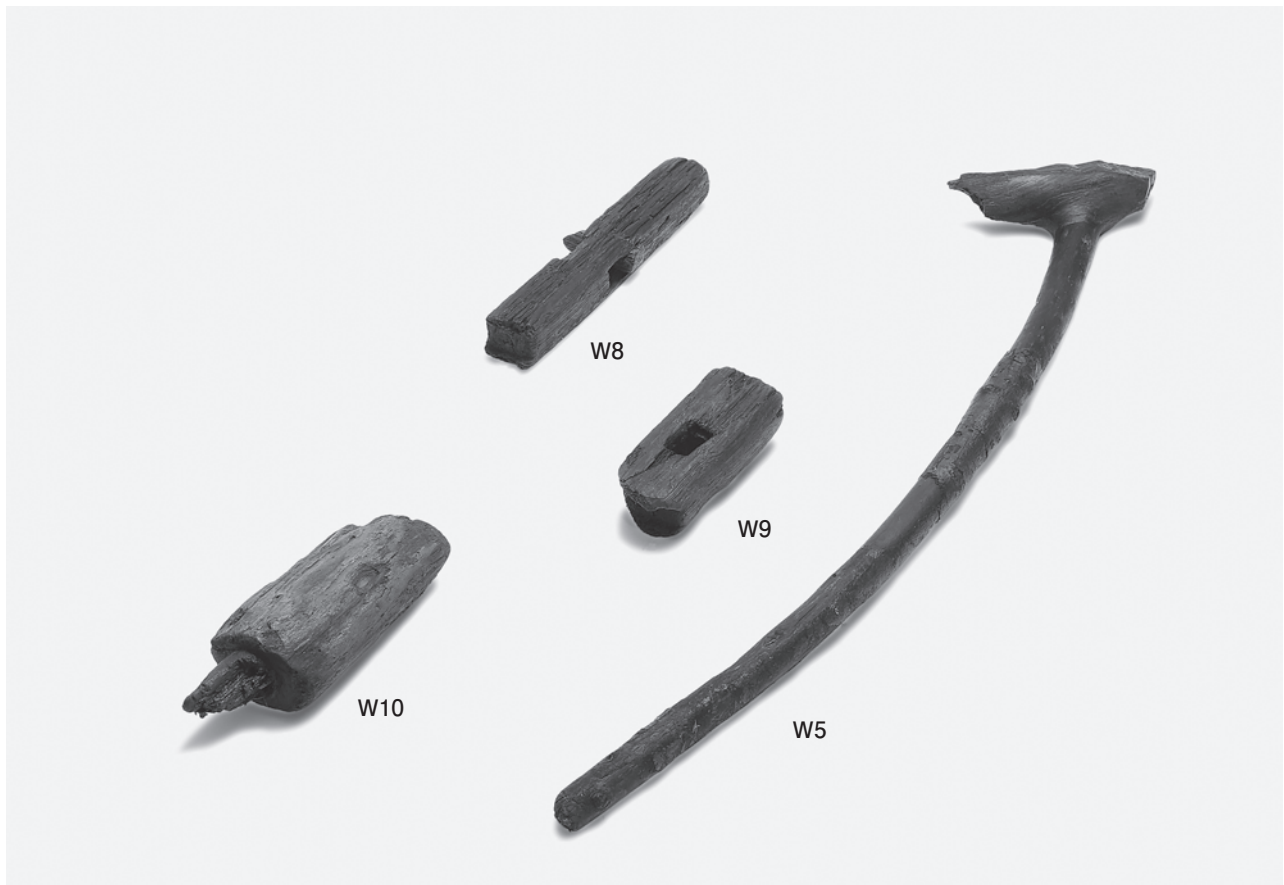
3 石器 (9) 權?



4 石器 (10) 紡錘車未成品?



1 石器 (11) 砥石③



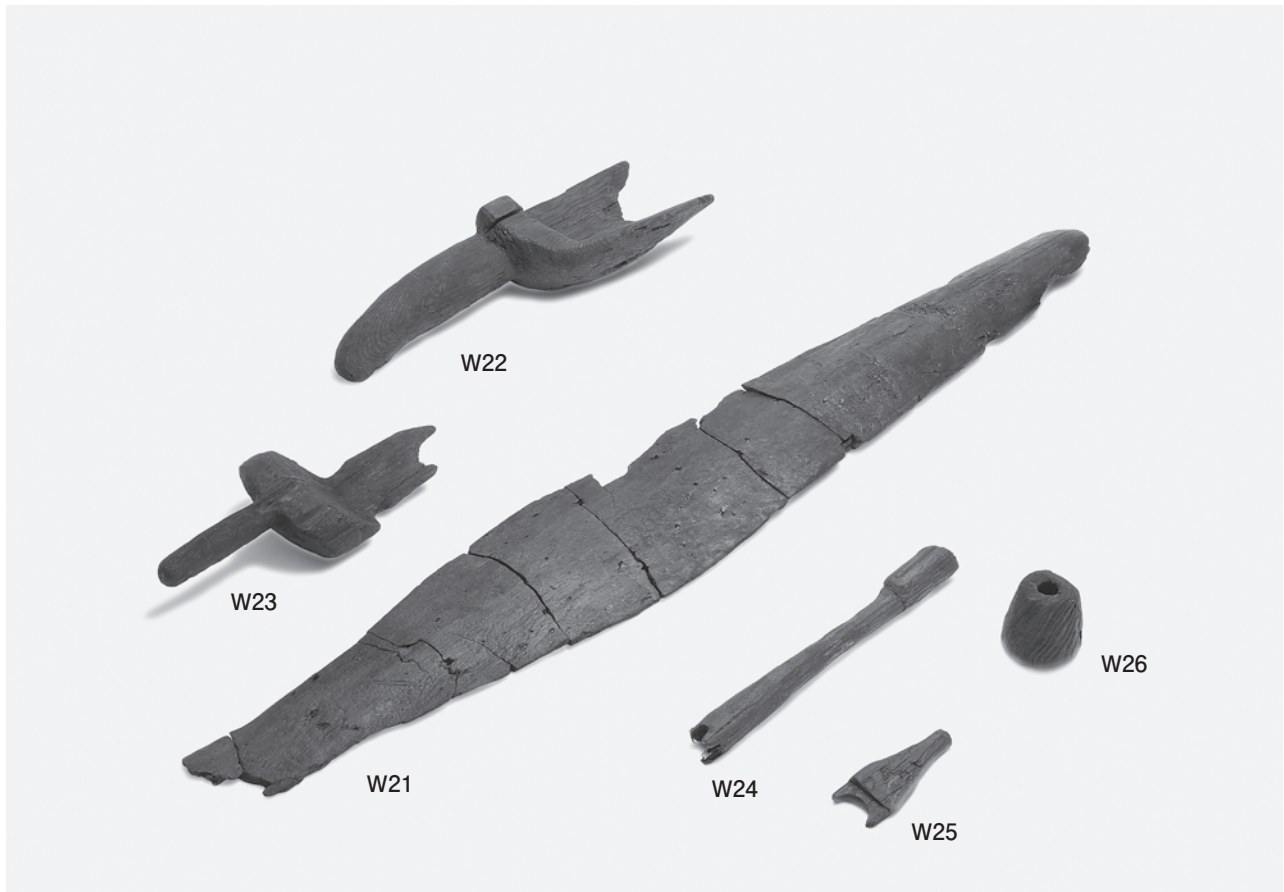
2 工具・農耕土木具 (1)



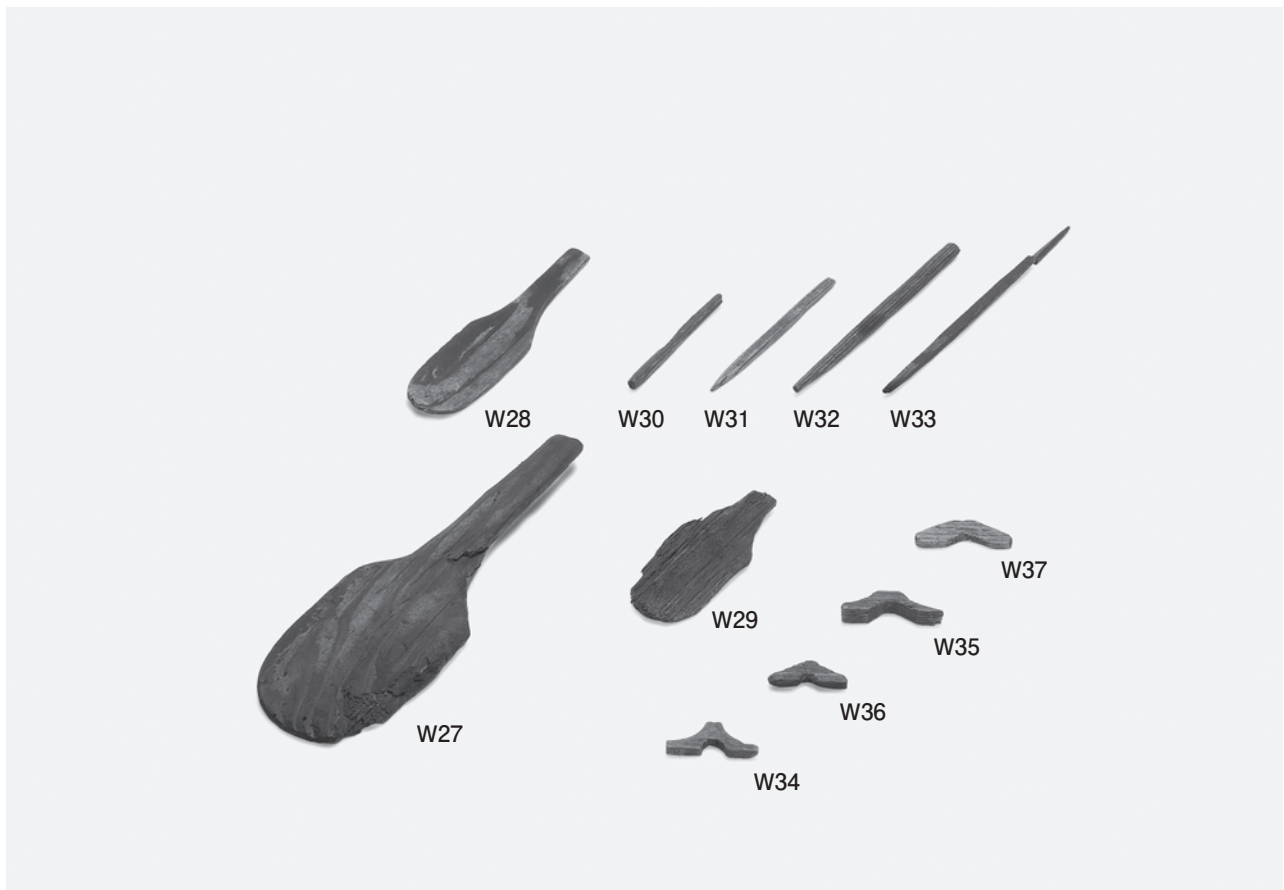
1 農耕土木具 (2) 田舟



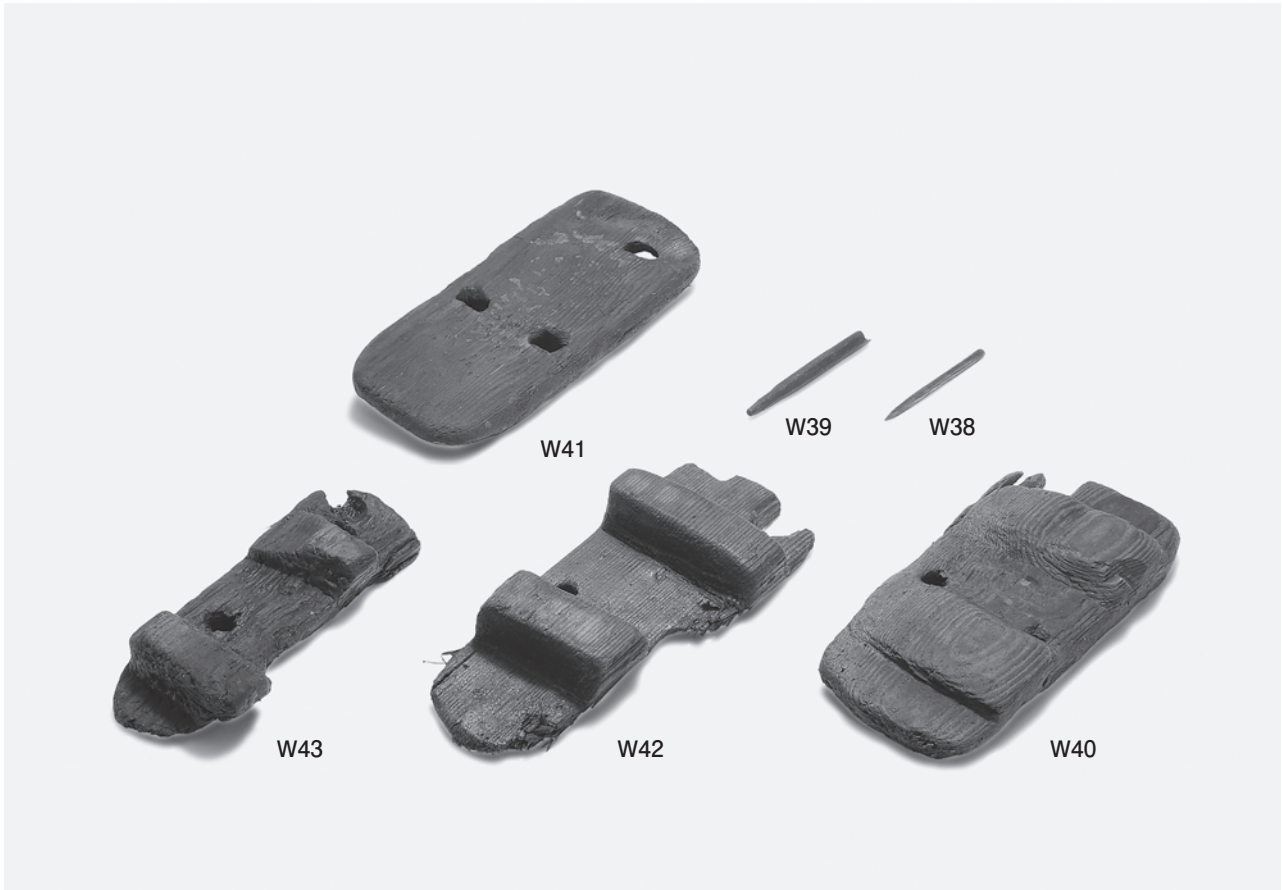
2 編み具 木錘



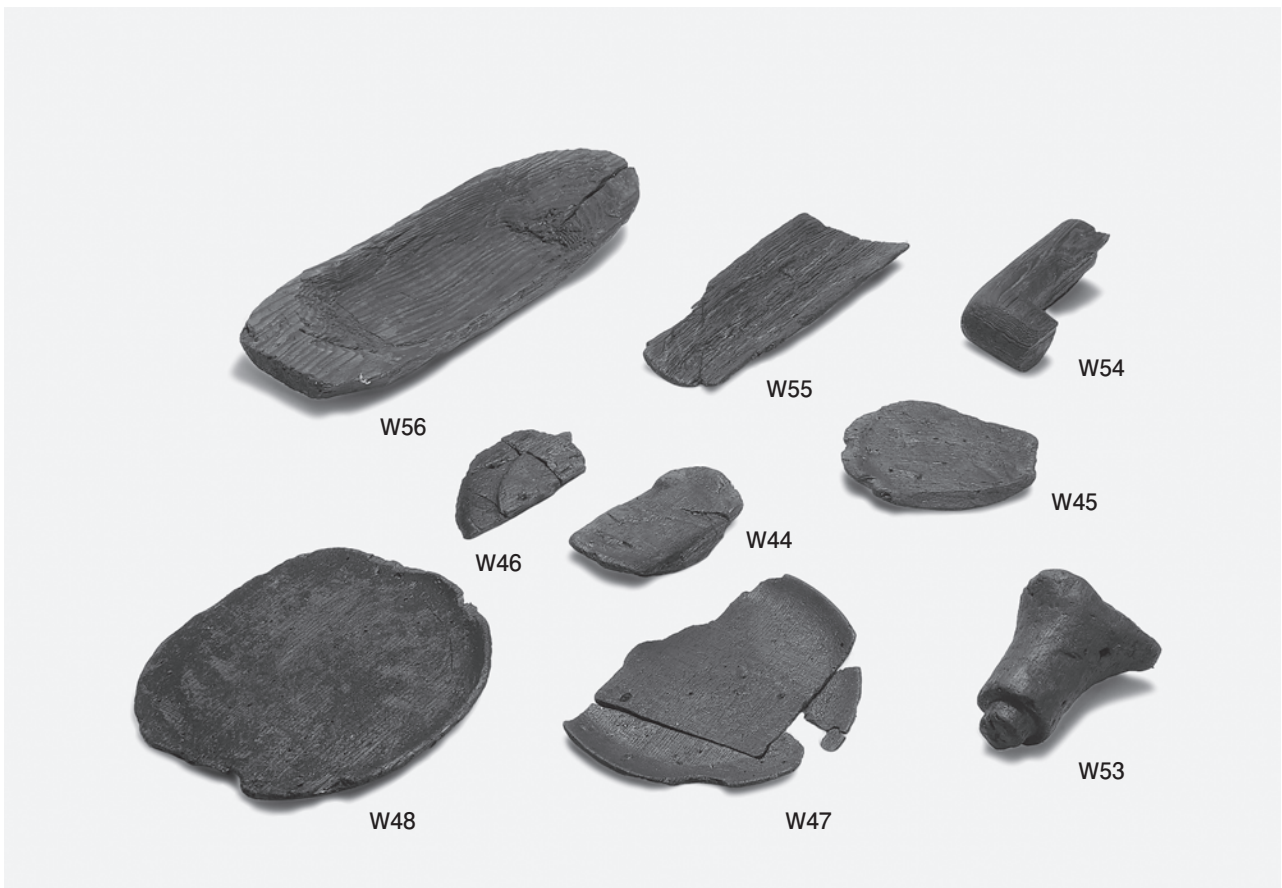
1 漁労具・紡織具



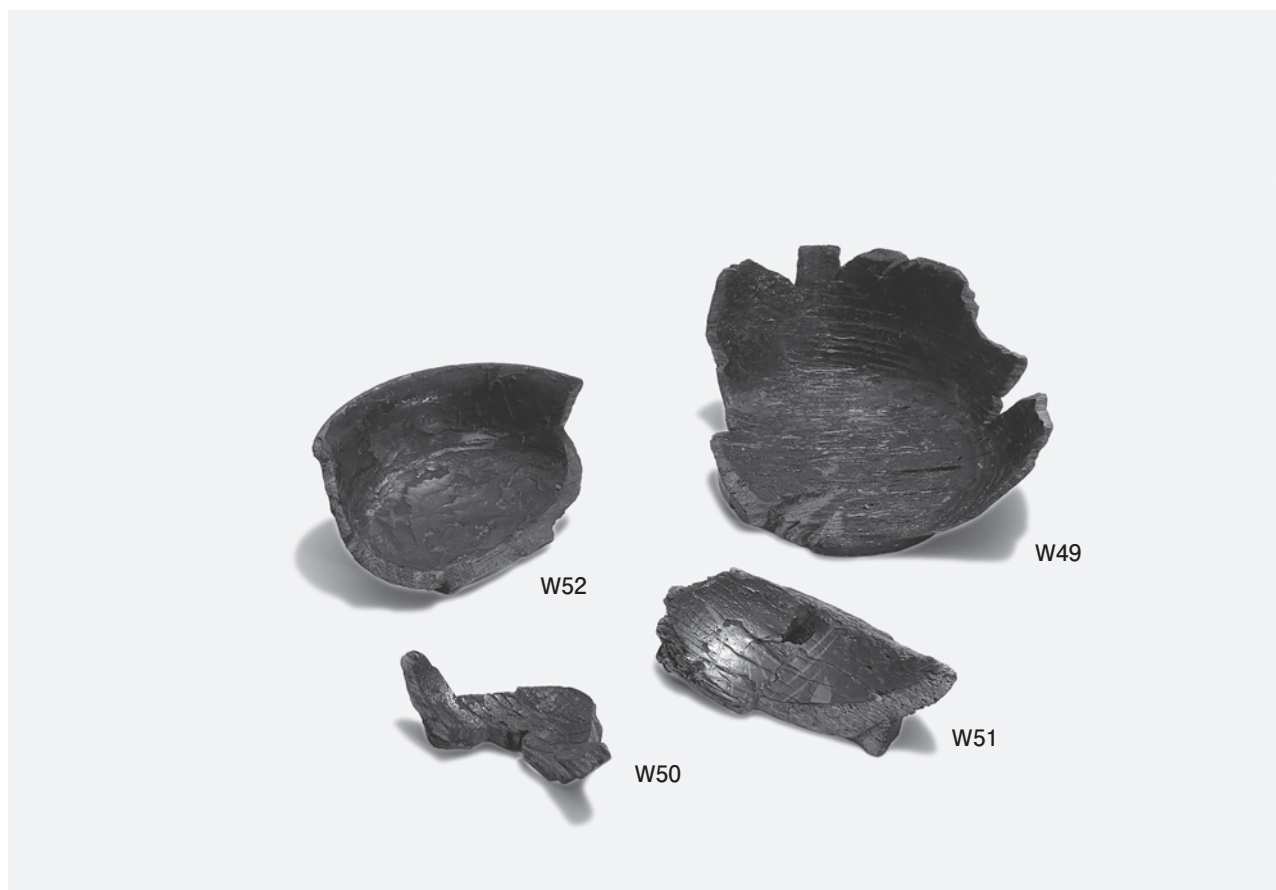
2 調理加工具・食事具・楽器



1 服飾具



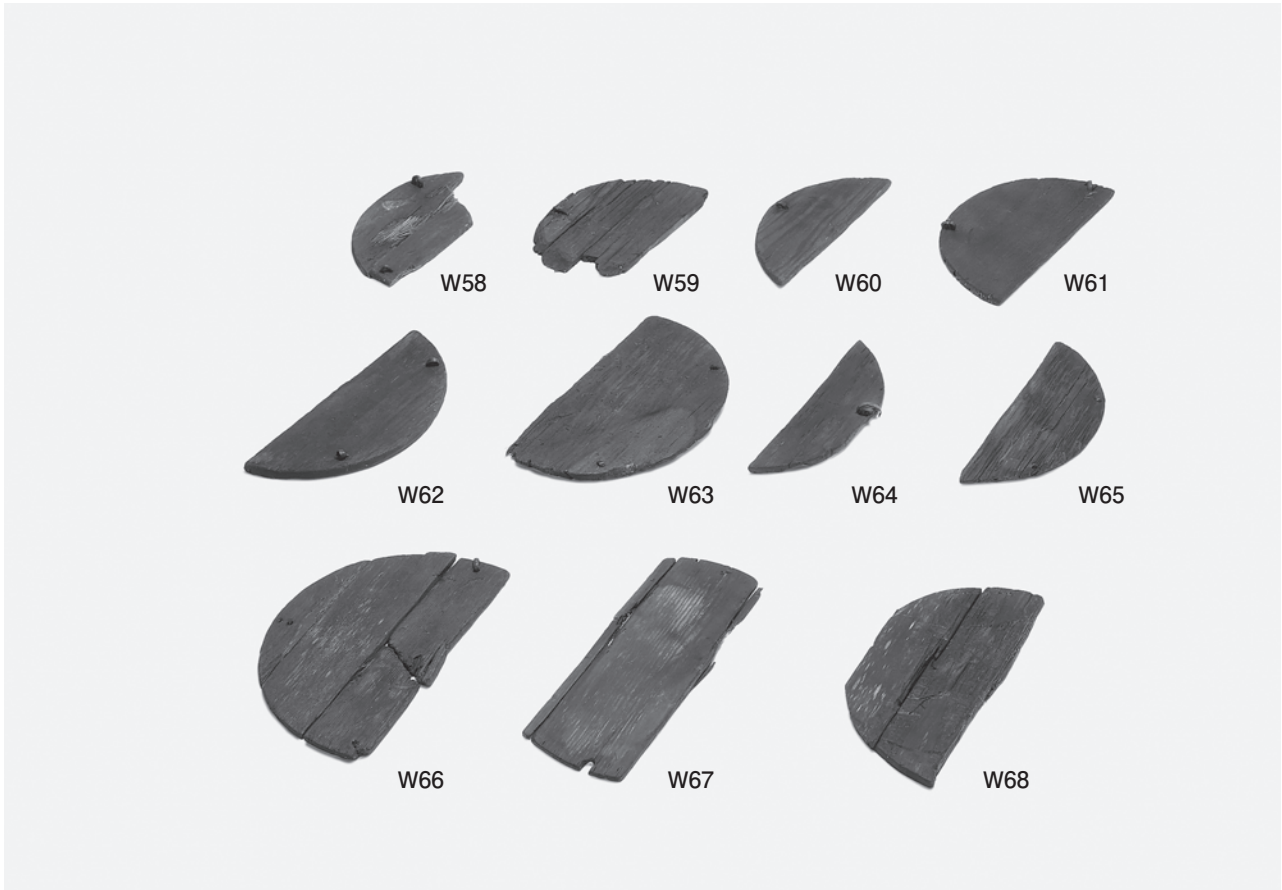
2 容器 (1) 挽物・割物



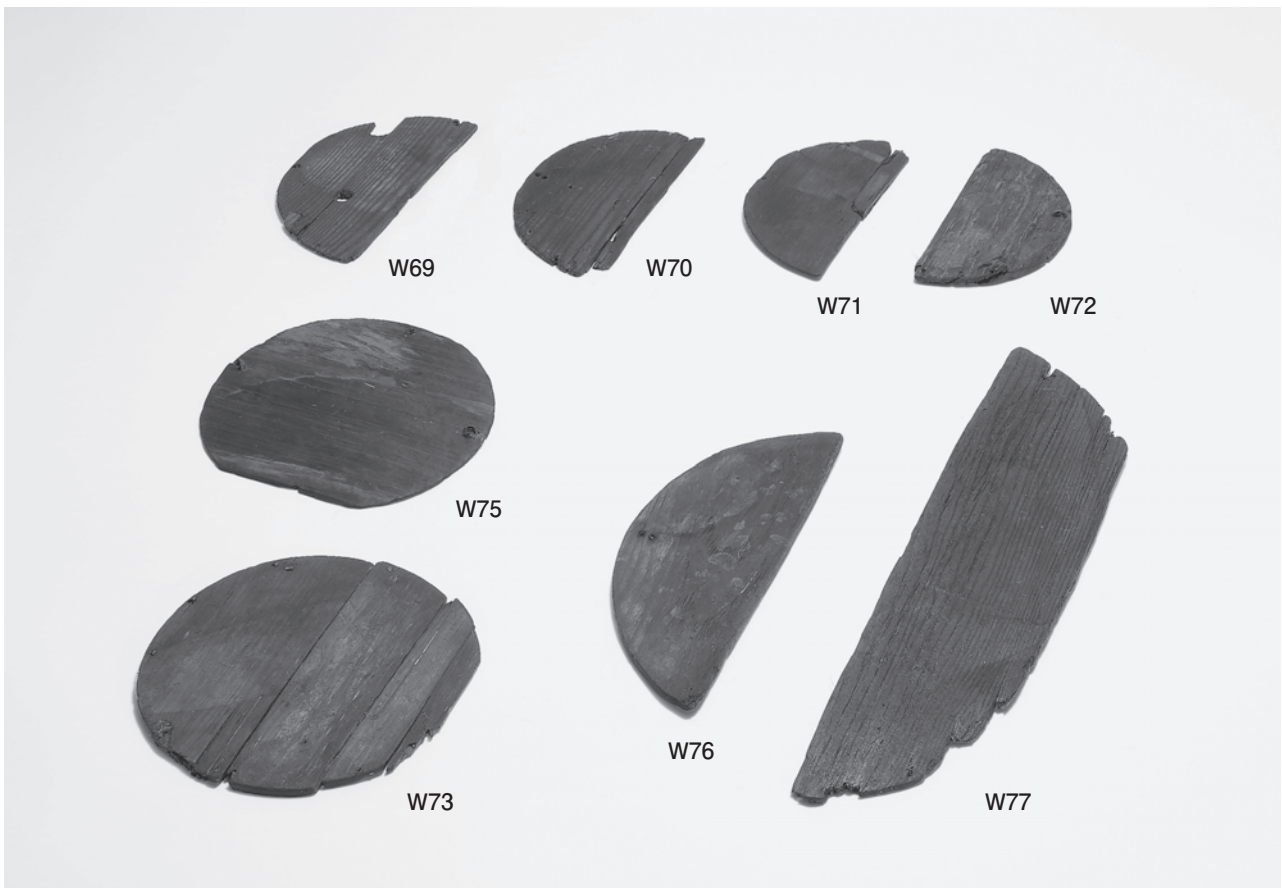
1 容器 (2) 挽物 (漆器椀)



2 容器 (3) 割物 (槽)



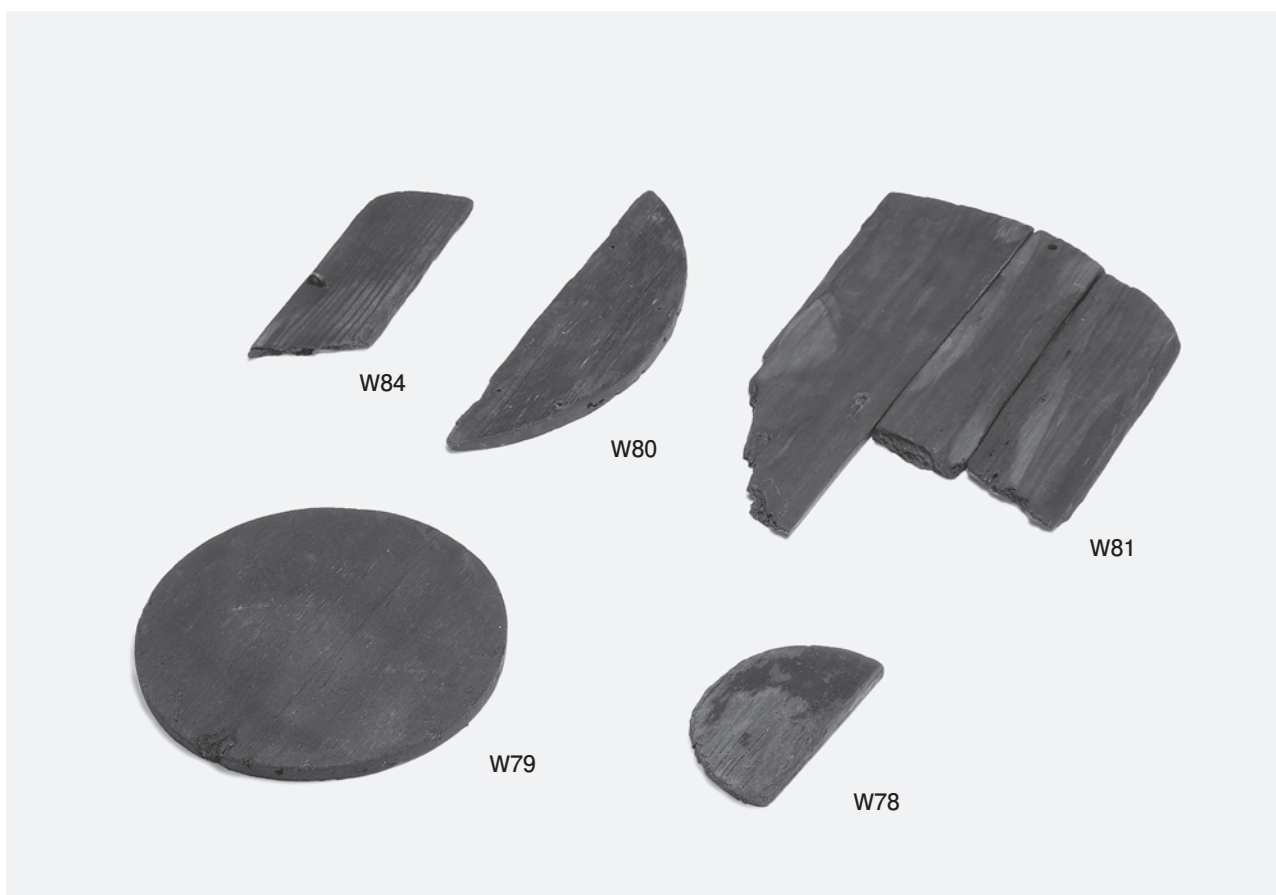
1 容器 (4) 曲物①



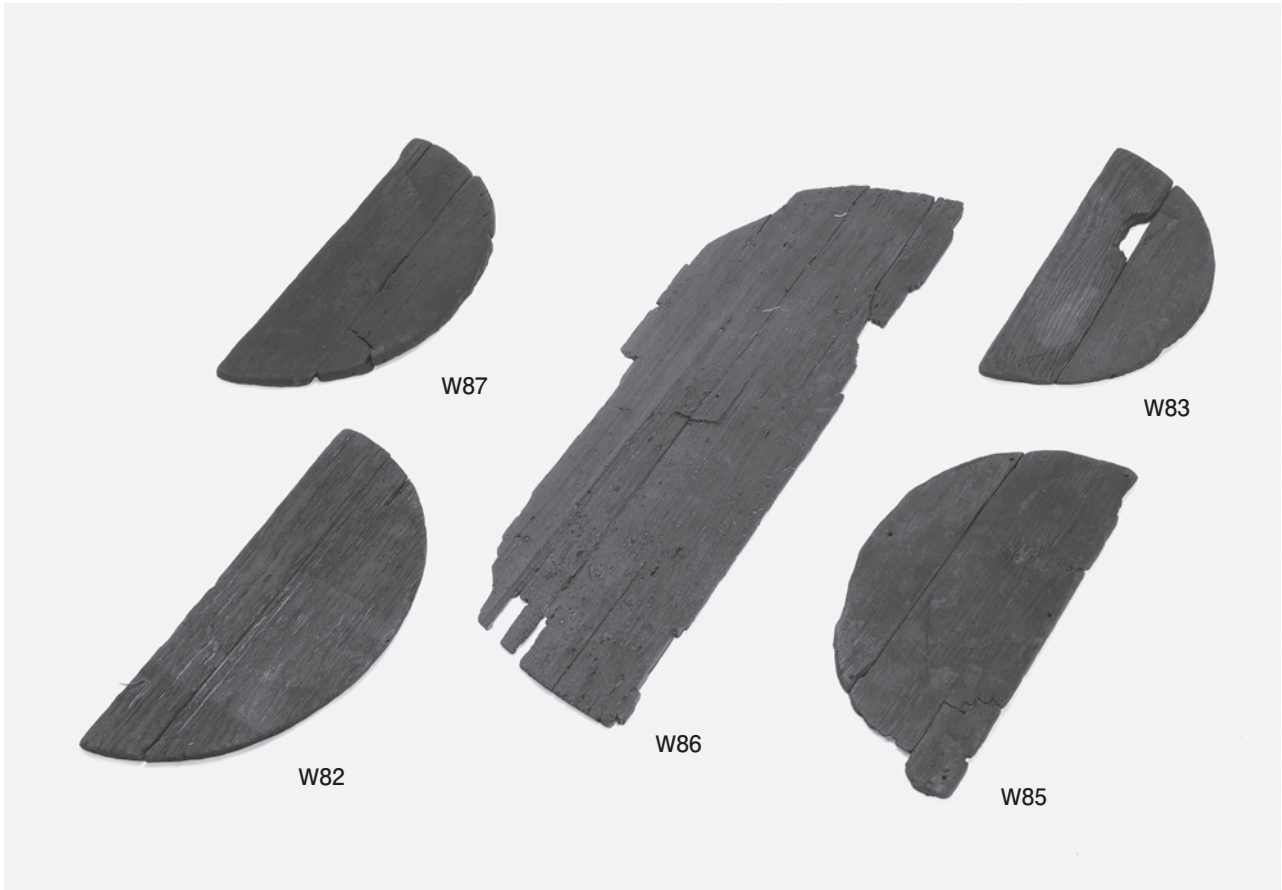
2 容器 (5) 曲物②



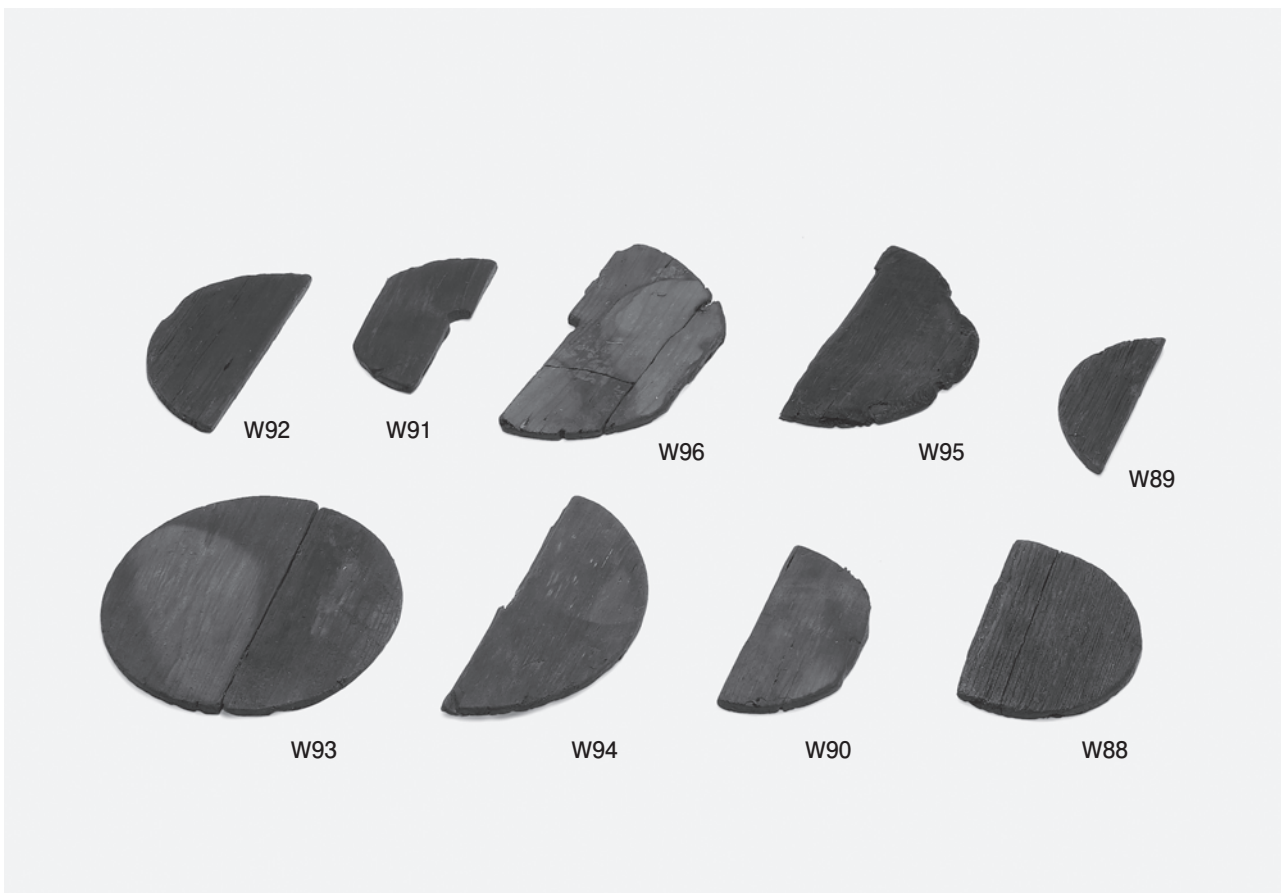
1 容器 (6) 曲物③



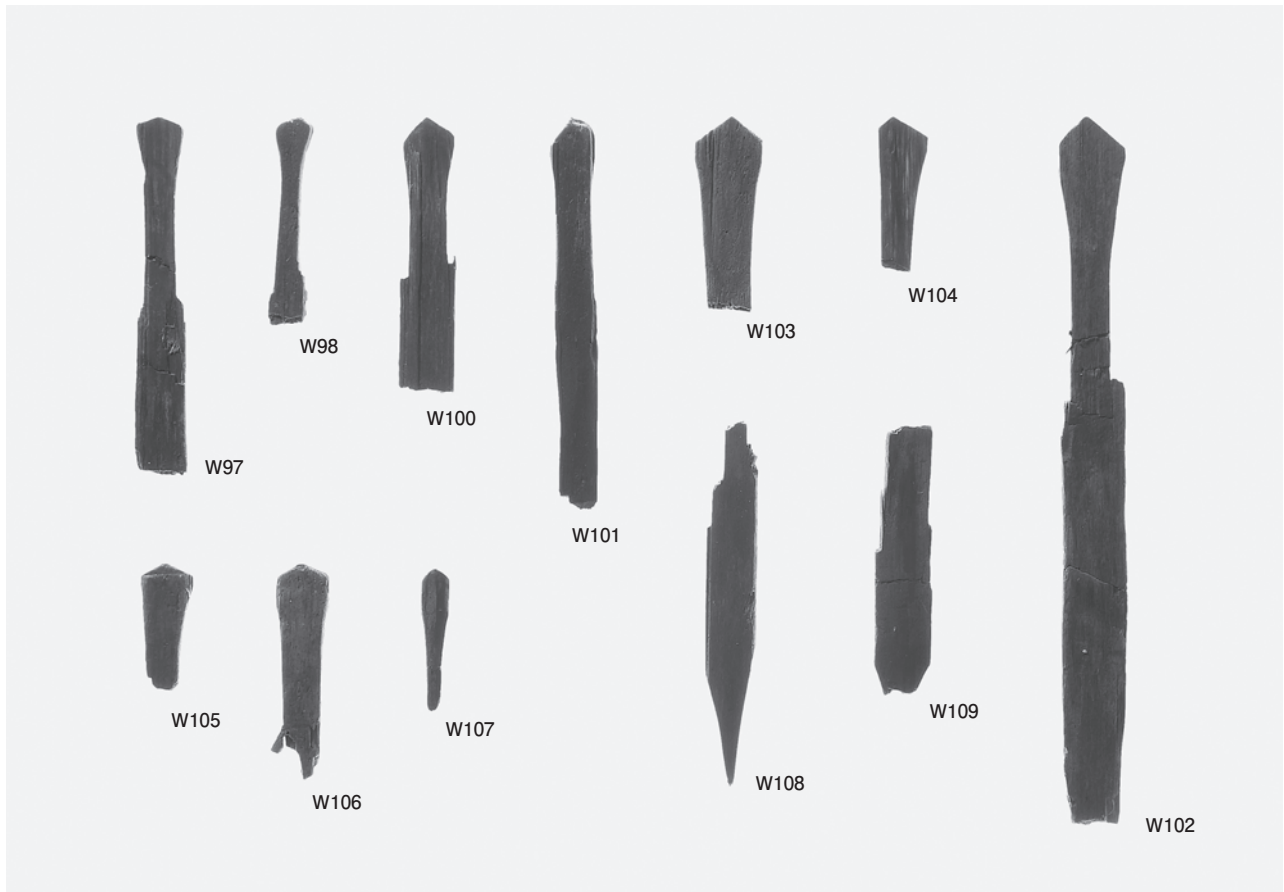
2 容器 (7) 曲物④



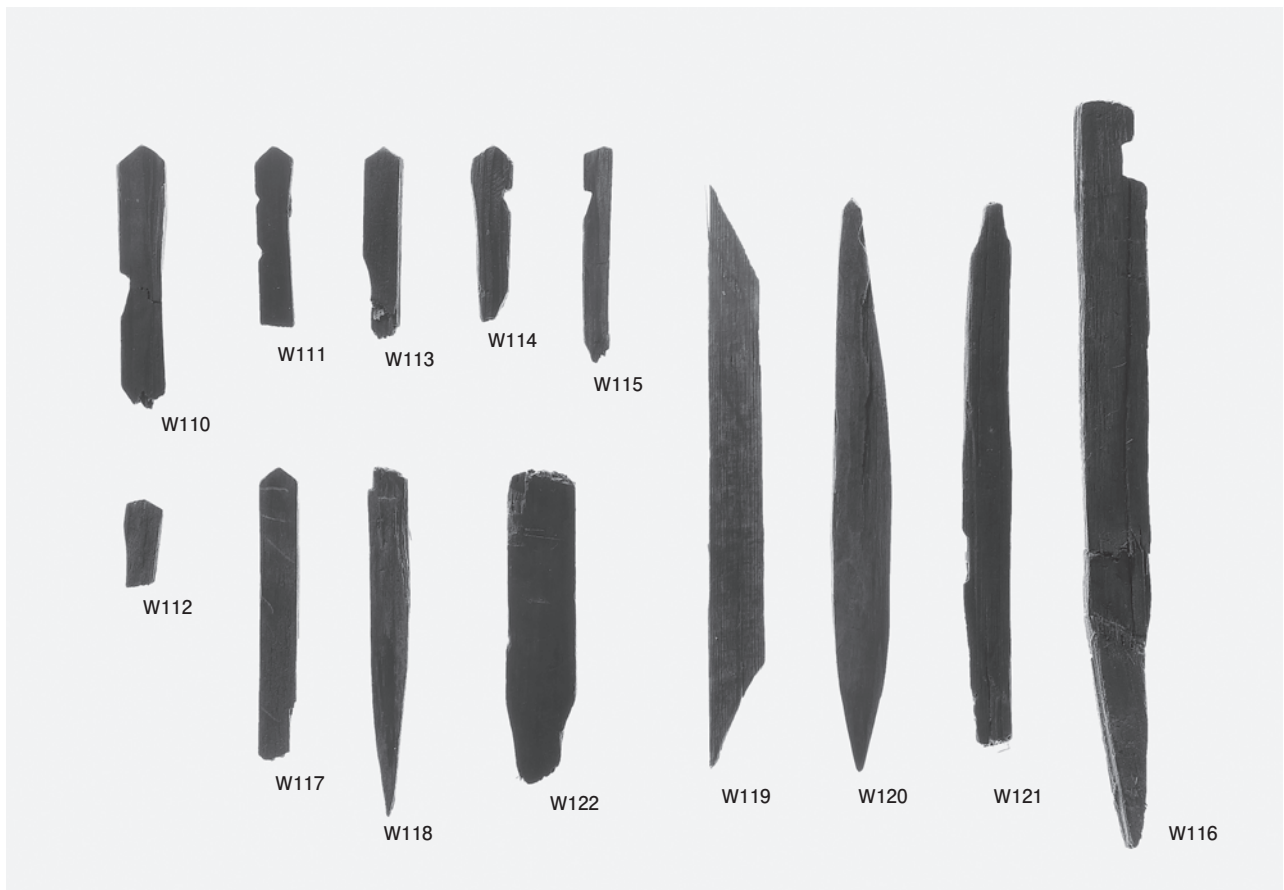
1 容器 (8) 曲物⑤



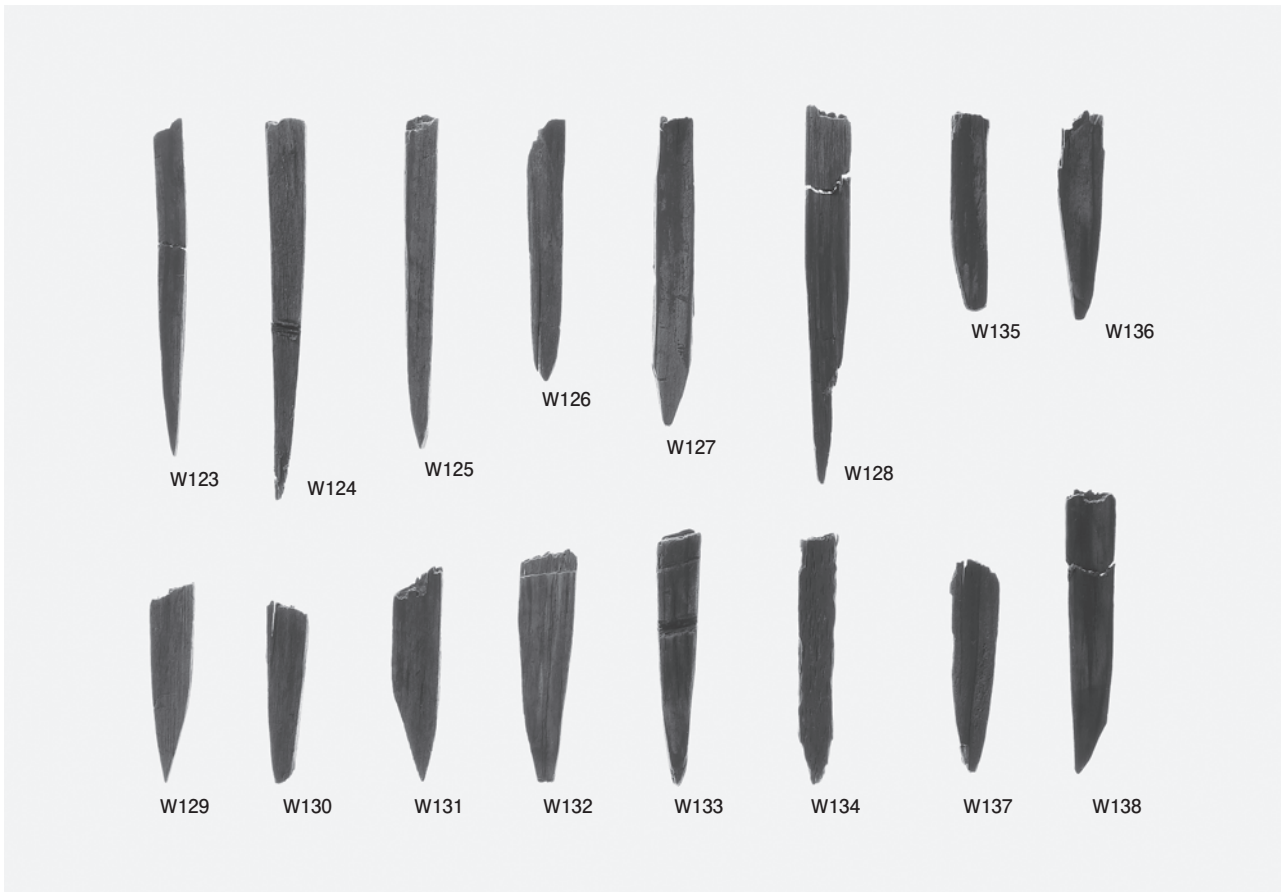
2 容器 (9) 蓋板



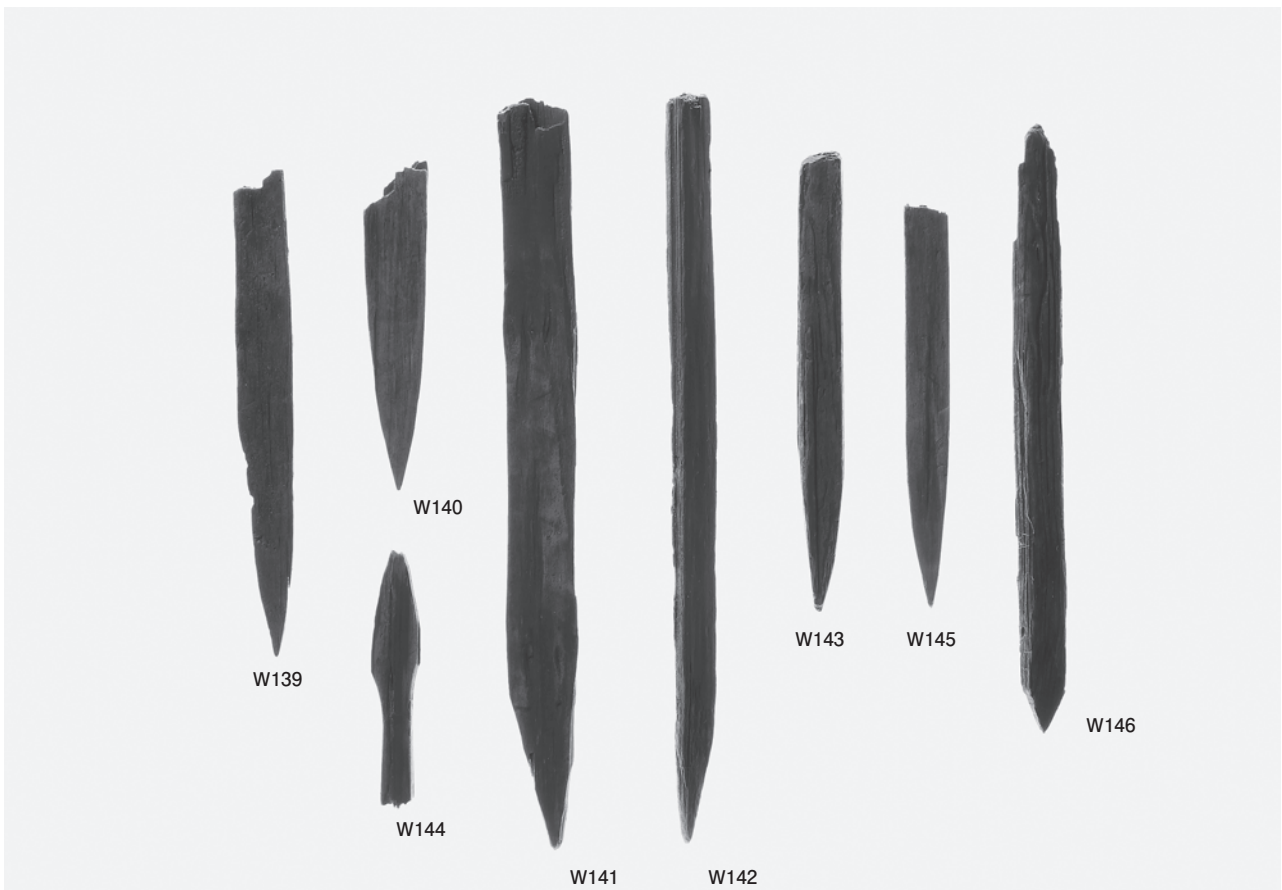
1 祭祀具 齋串 (1)



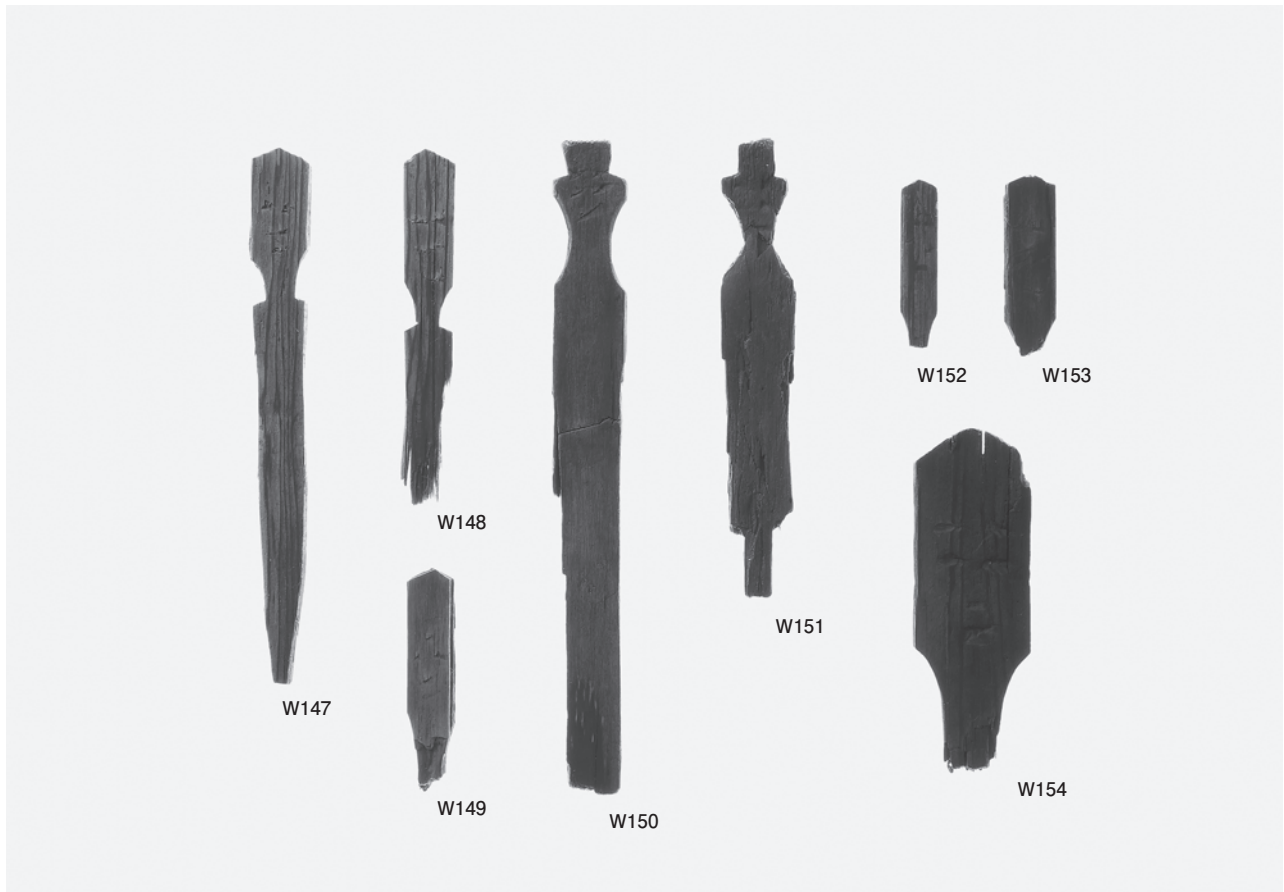
2 祭祀具 齋串 (2)



1 祭祀具 齋串 (3)



2 祭祀具 齋串 (4)



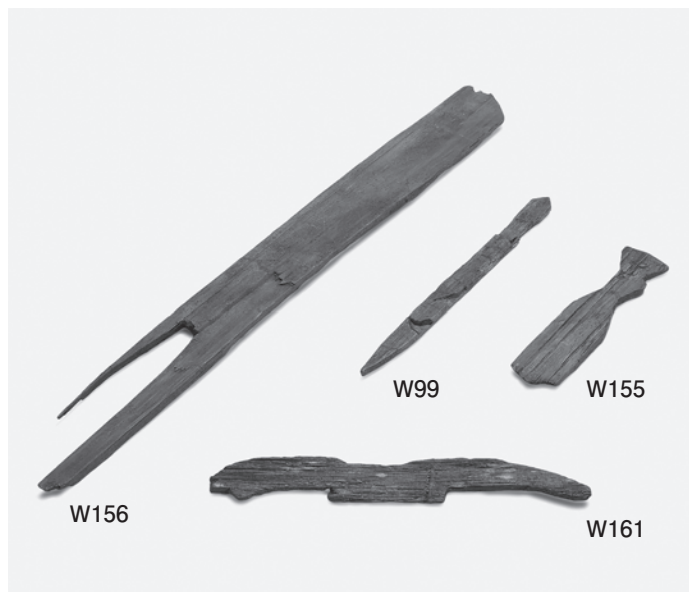
1 祭祀具 人形 (1)



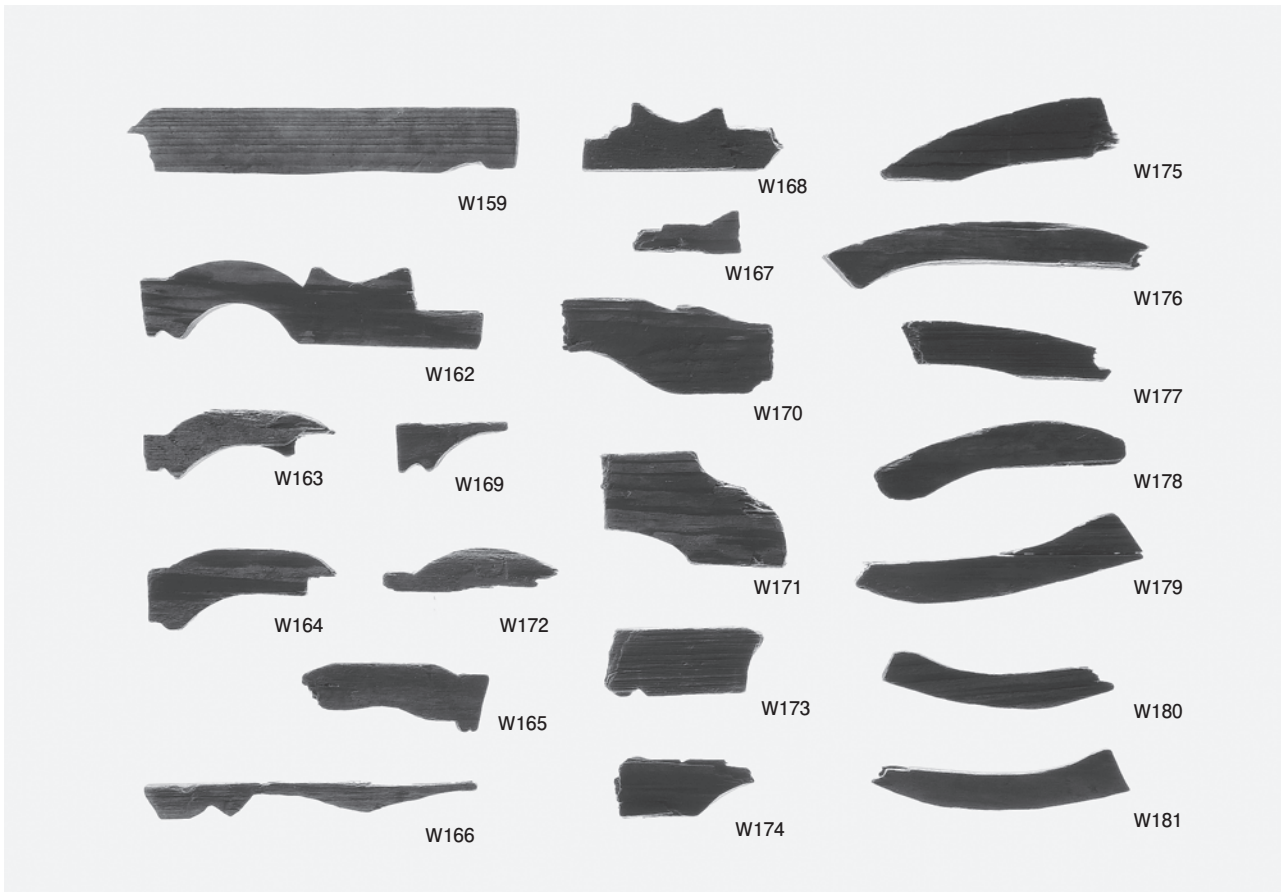
2 祭祀具 人形 (2)



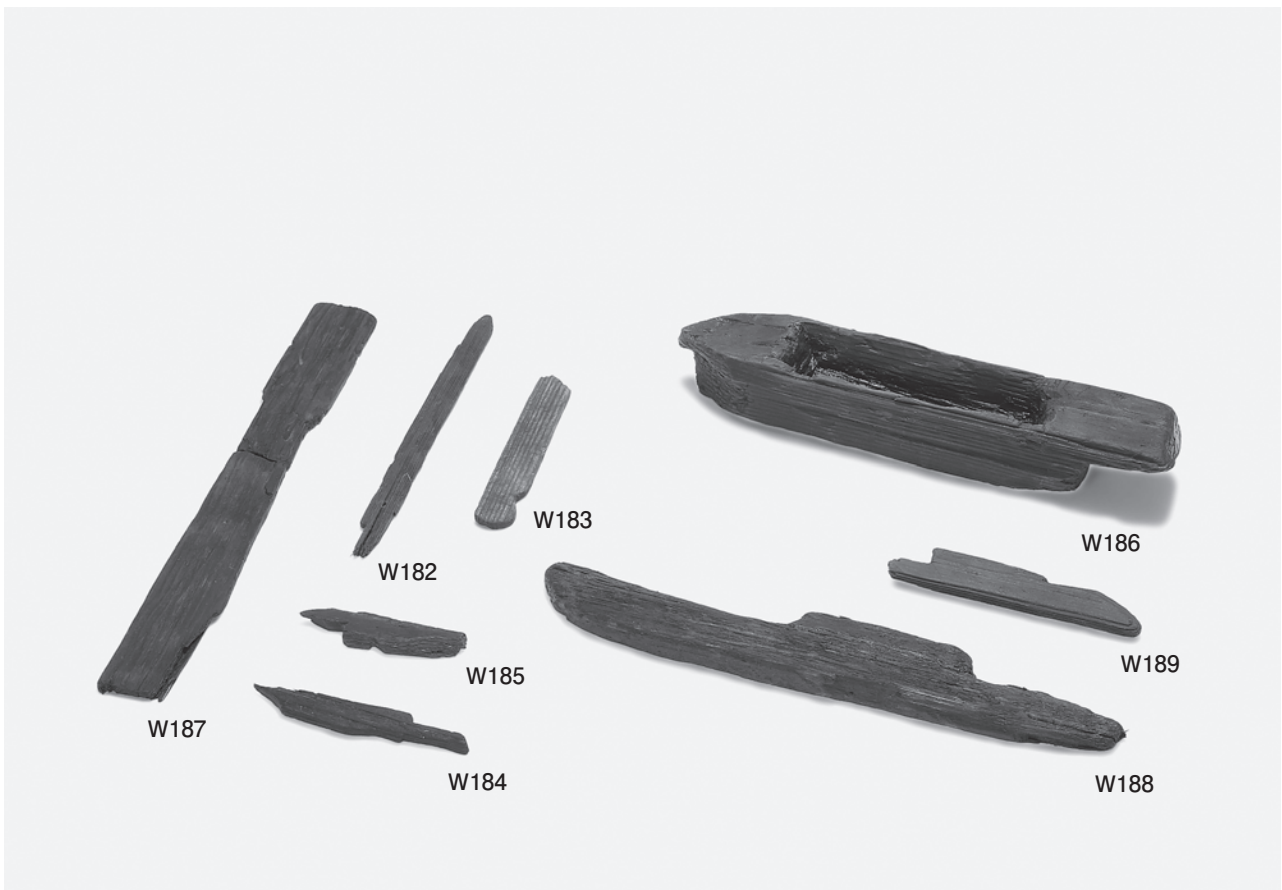
3 祭祀具 馬形



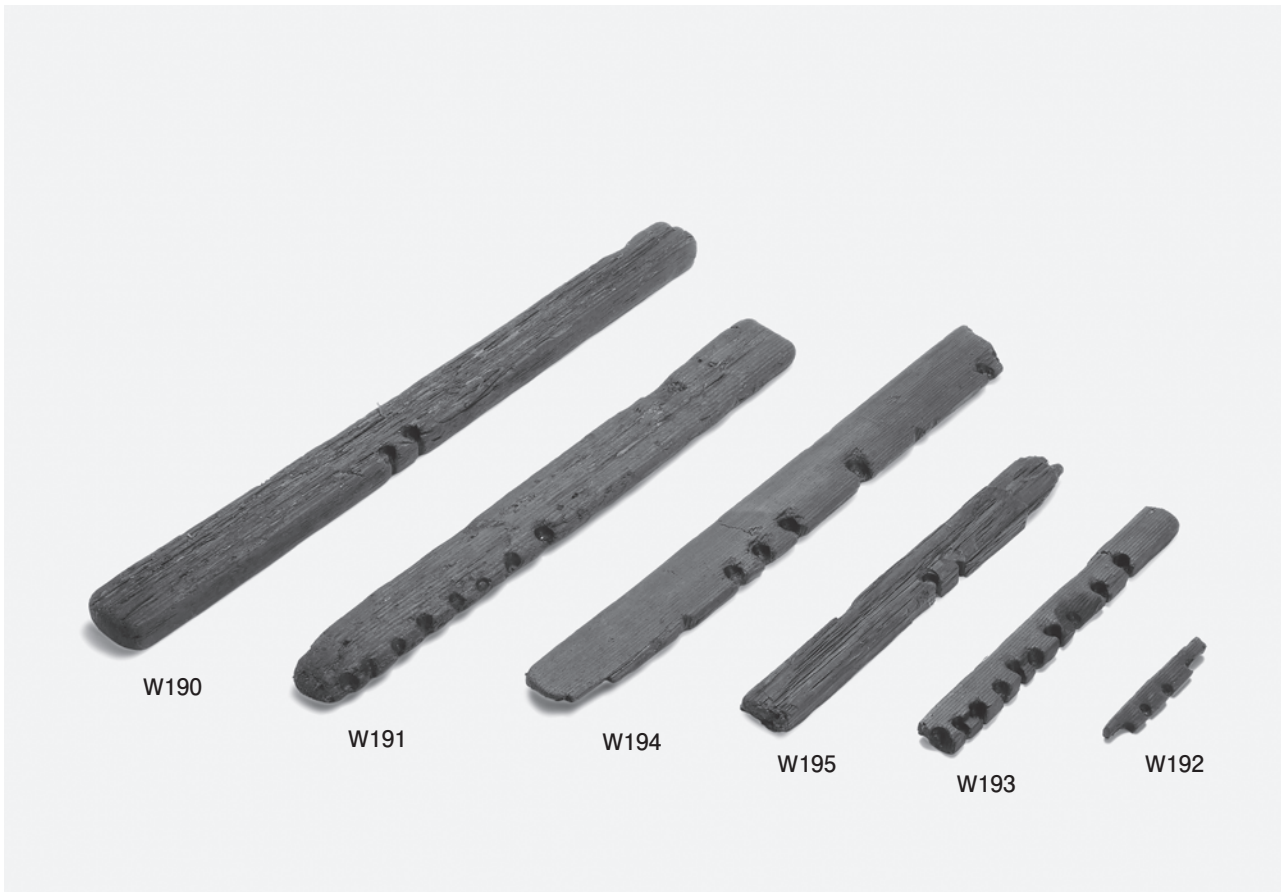
4 祭祀具 斎串・人形・馬形



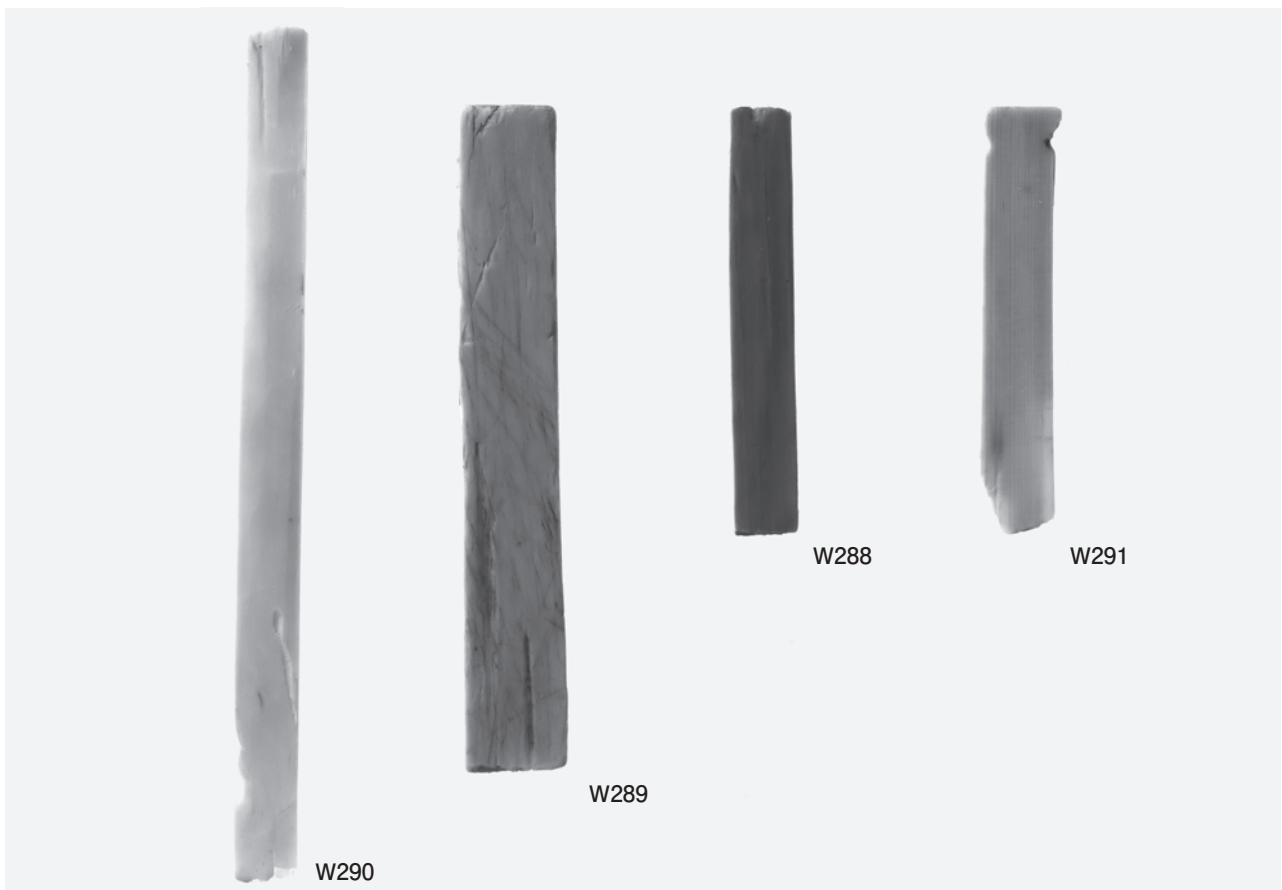
1 祭祀具 馬形



2 祭祀具 武器形・鳥形・舟形ほか



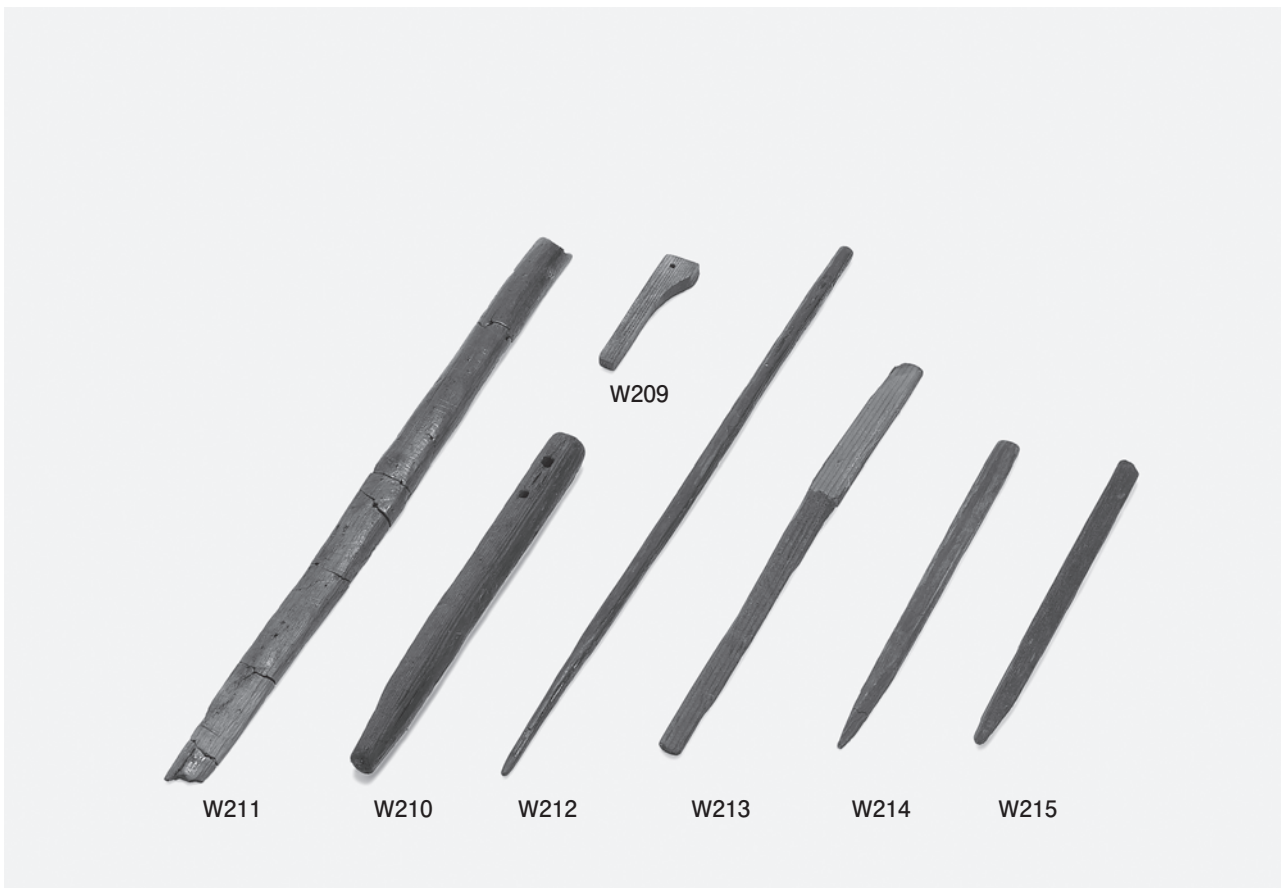
1 工具 発火具 (火鑽臼)



2 用途不明品 木筒状木製品



1 部材 (1)



2 部材 (2)



1 部材 (3)



2 滑車・つけ木



3 建築材 (1)



4 建築材 (2)



W225

1 建築材 (3) 柱 (掘立柱建物 1)



W226

2 建築材 (4) 柱 (掘立柱建物 1)



W228

3 建築材 (5) 柱 (掘立柱建物 1)



W227

4 建築材 (6) 柱 (掘立柱建物 1)



W229

5 建築材 (7) 柱 (掘立柱建物 10)

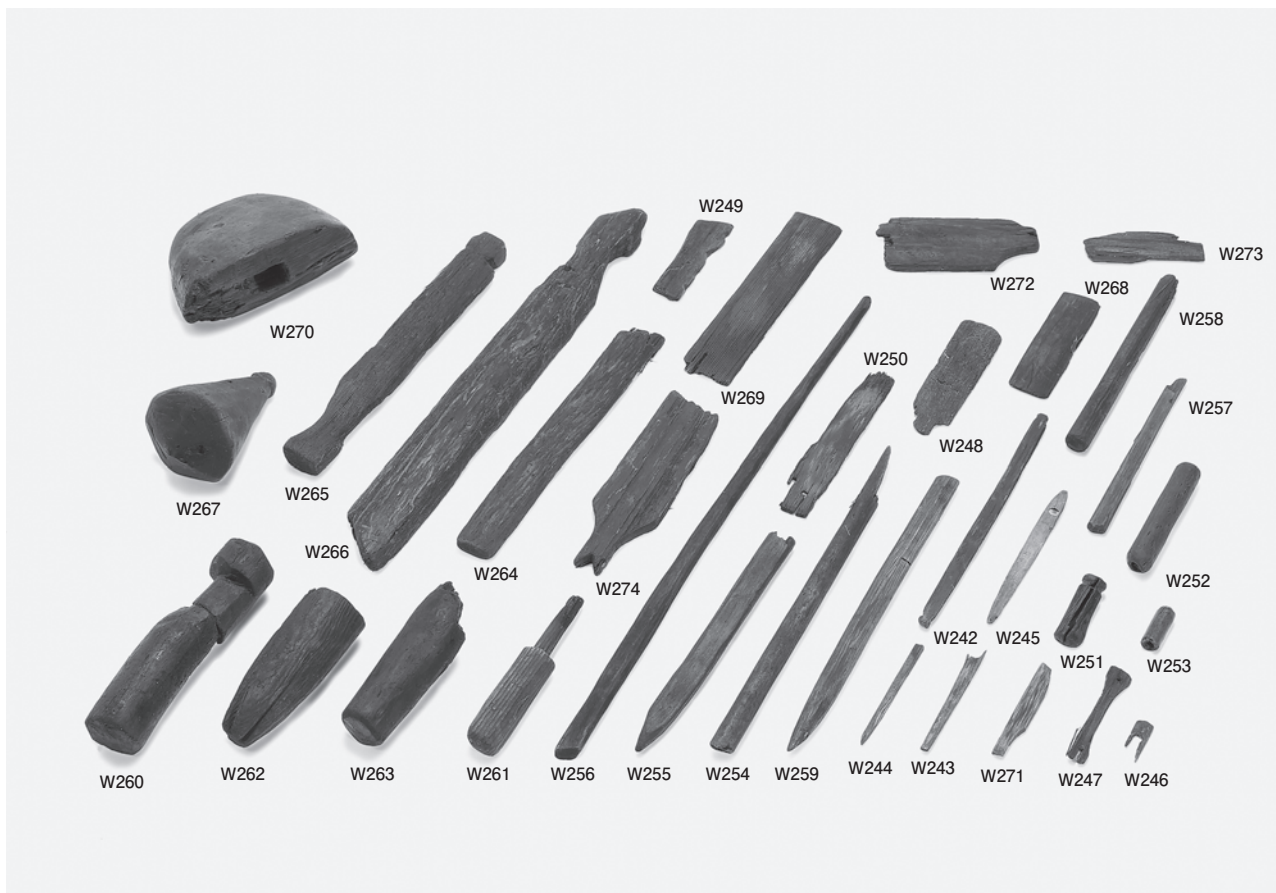


W224

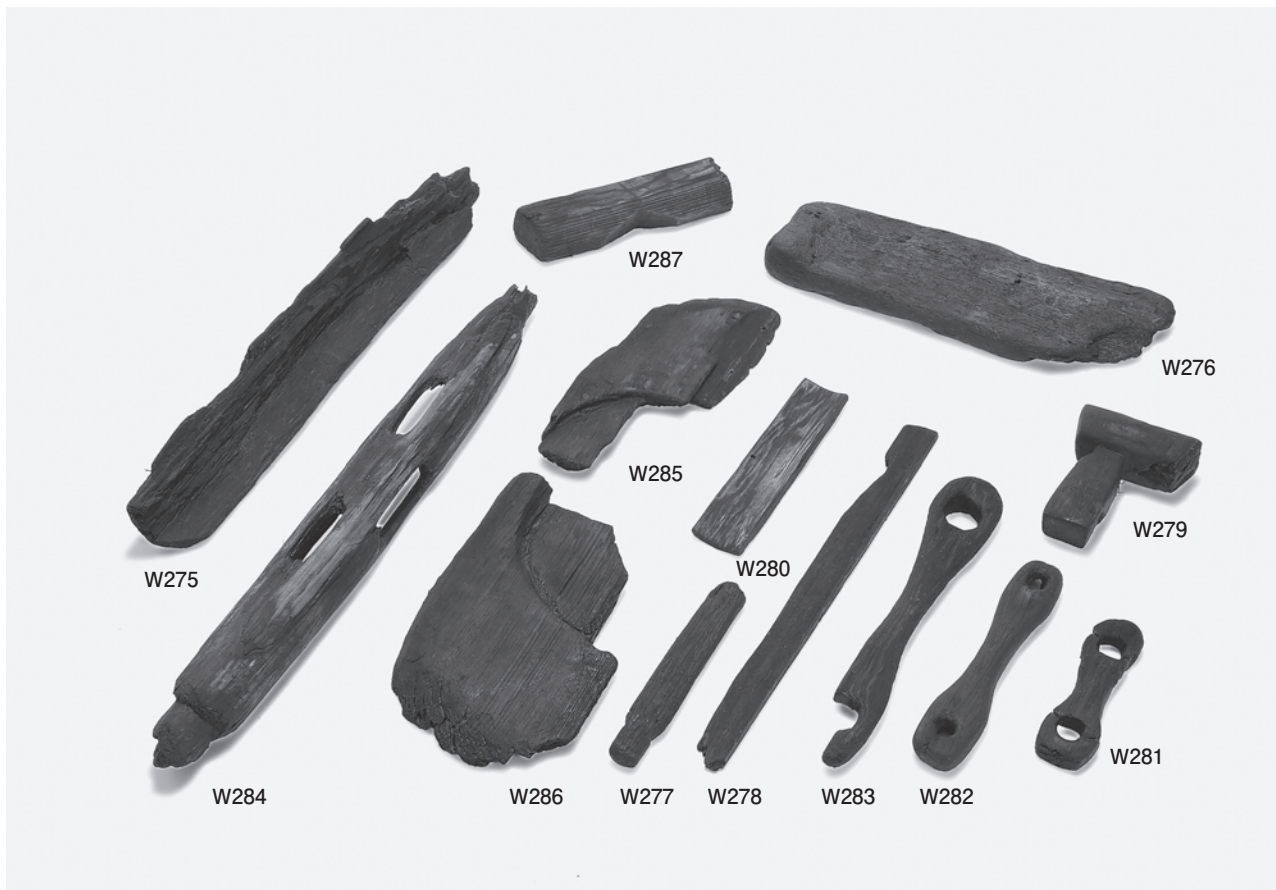
6 建築材 (8)







1 用途不明品 (1)



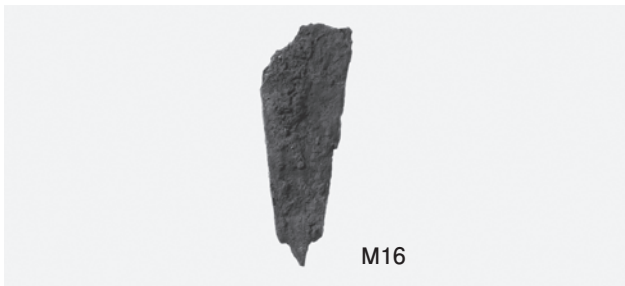
2 用途不明品 (2)



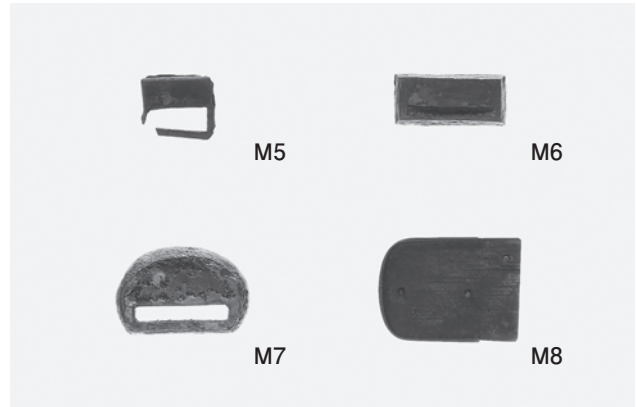
1 金属器 (1) 耳環



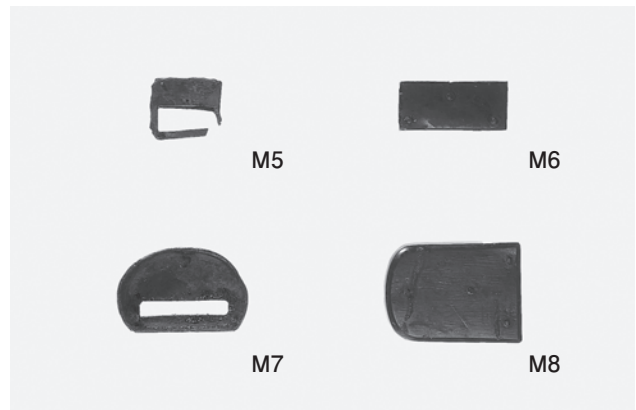
2 金属器 (2) 環状銅製品



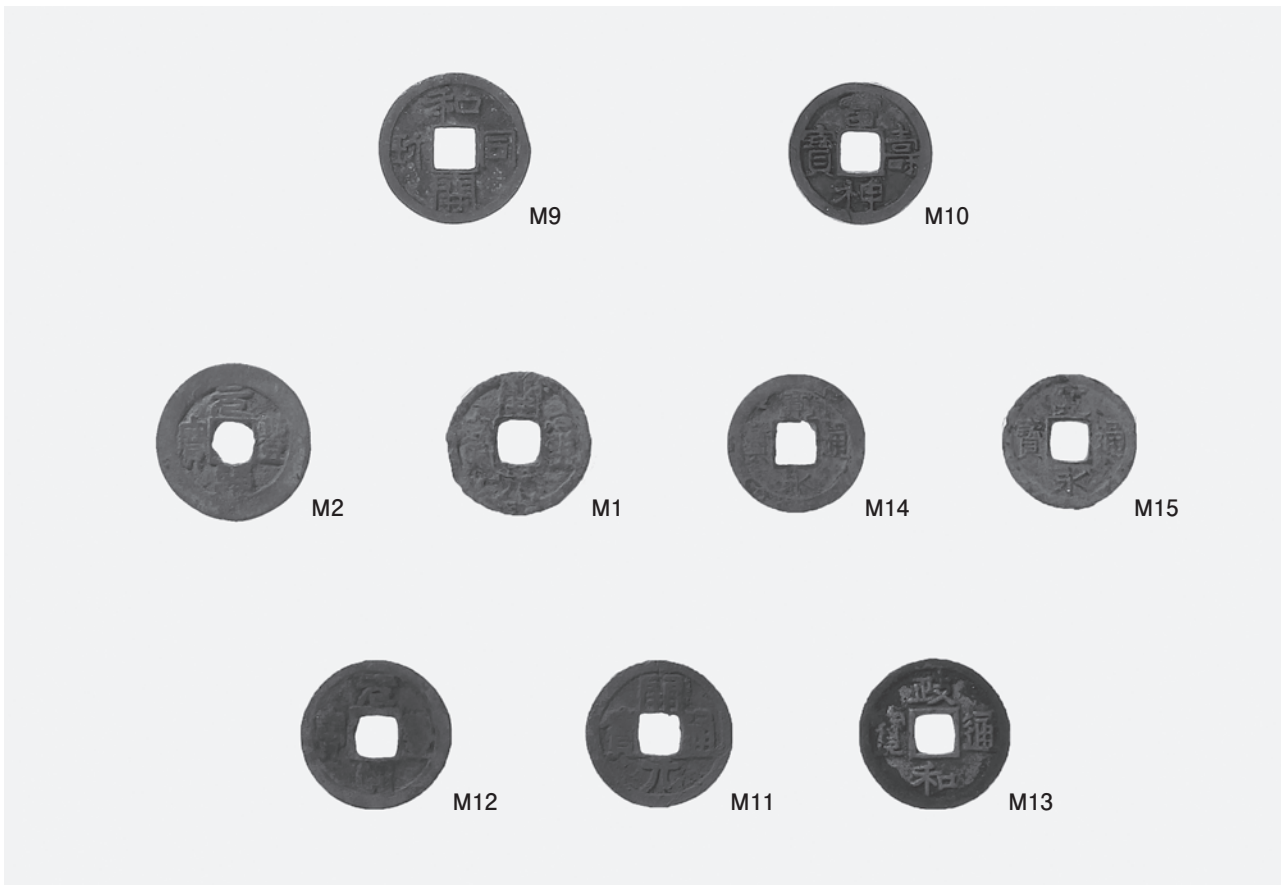
3 金属器 (3) 鉄鏃



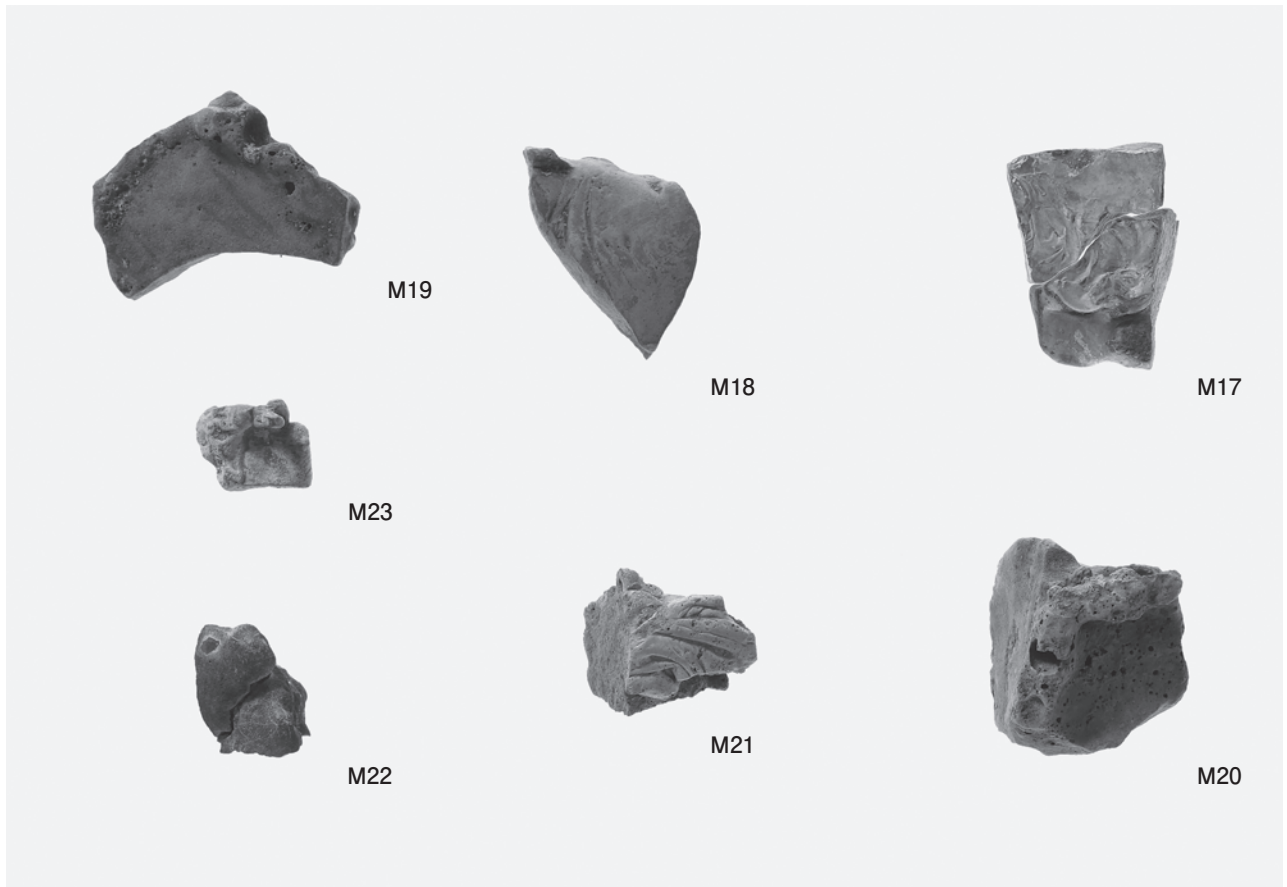
4 金属器 (4) 銅製帶金具 表



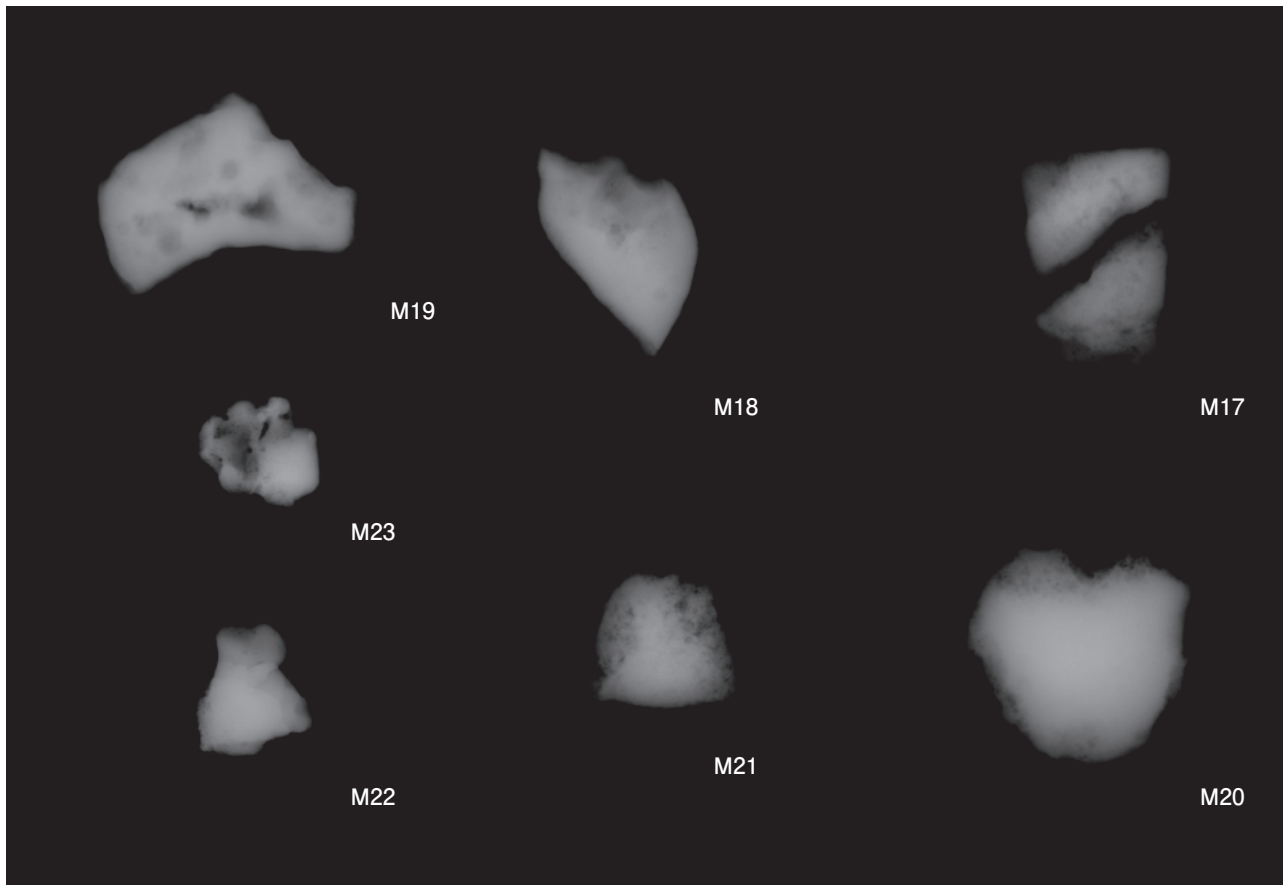
5 金属器 (5) 銅製帶金具 裏



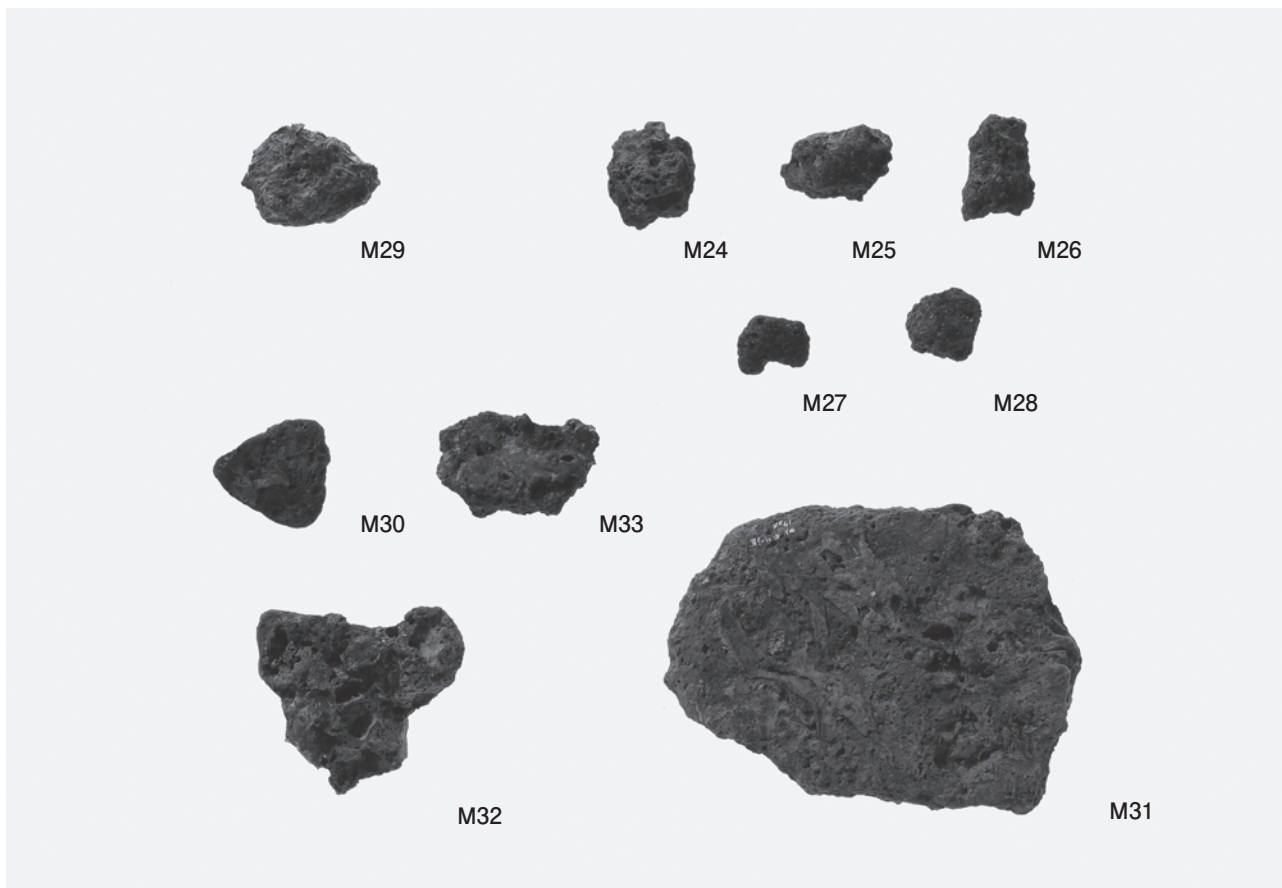
6 金属器 (6) 銭貨



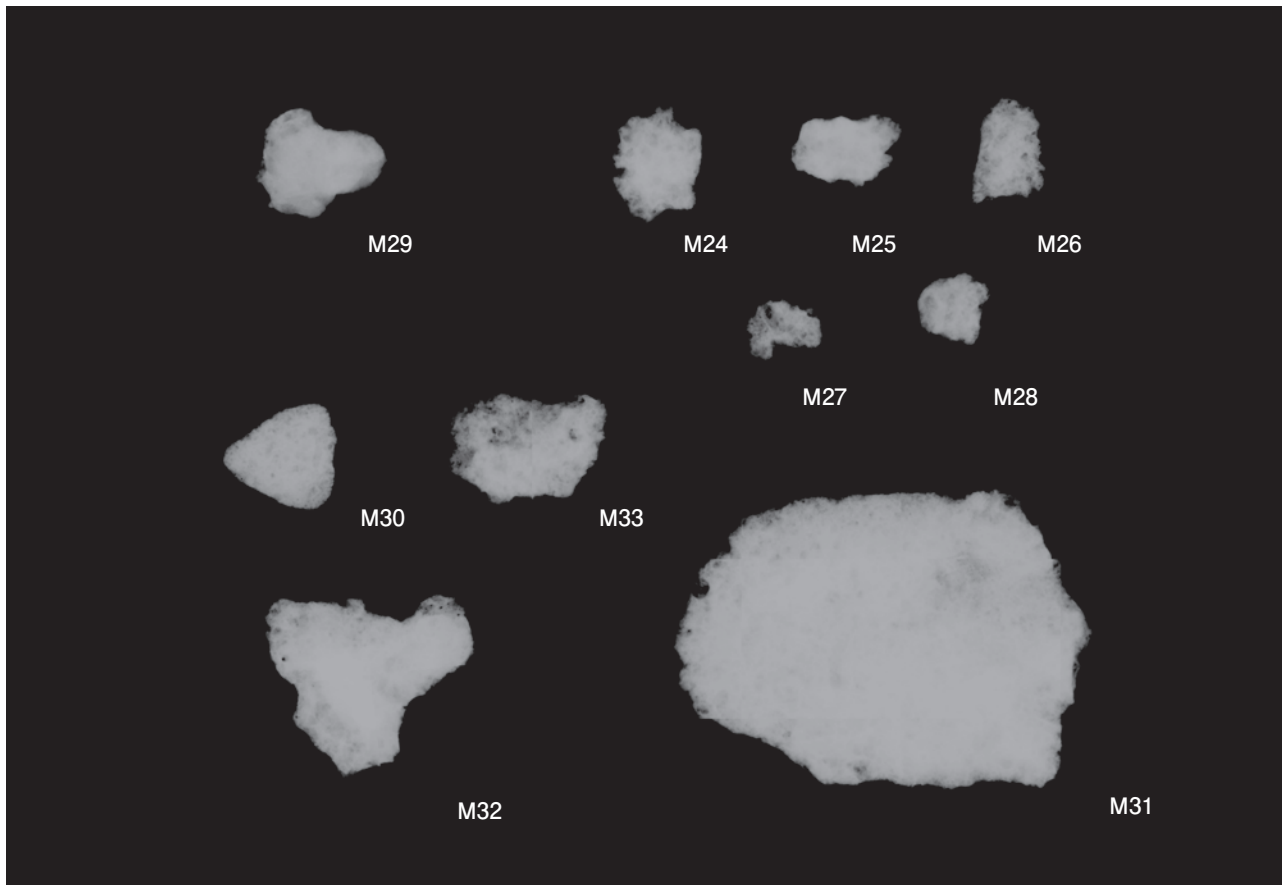
1 鉄滓 (1)



2 鉄滓 (2) X線写真



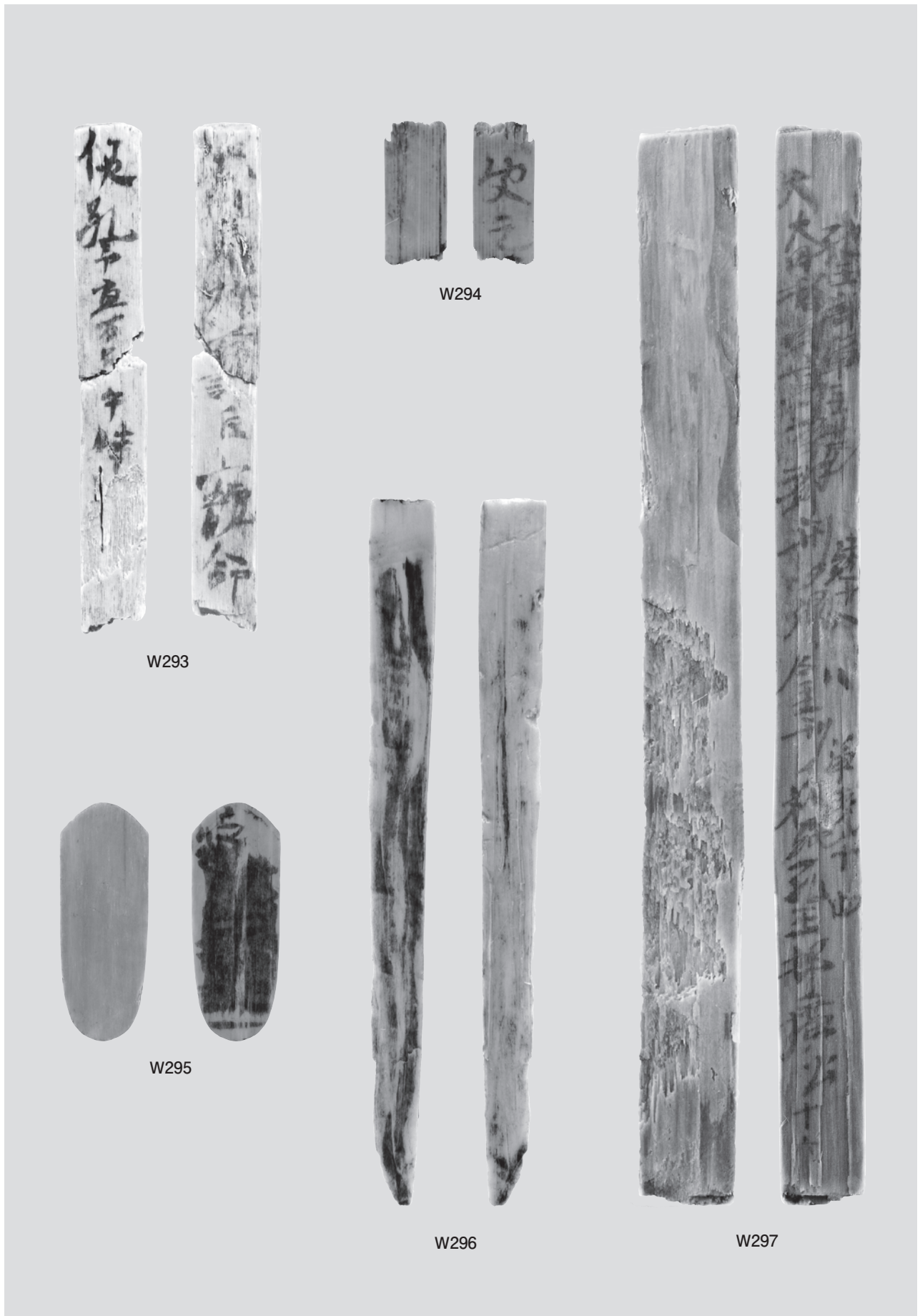
1 鉄滓 (3)



2 鉄滓 (4) X線写真



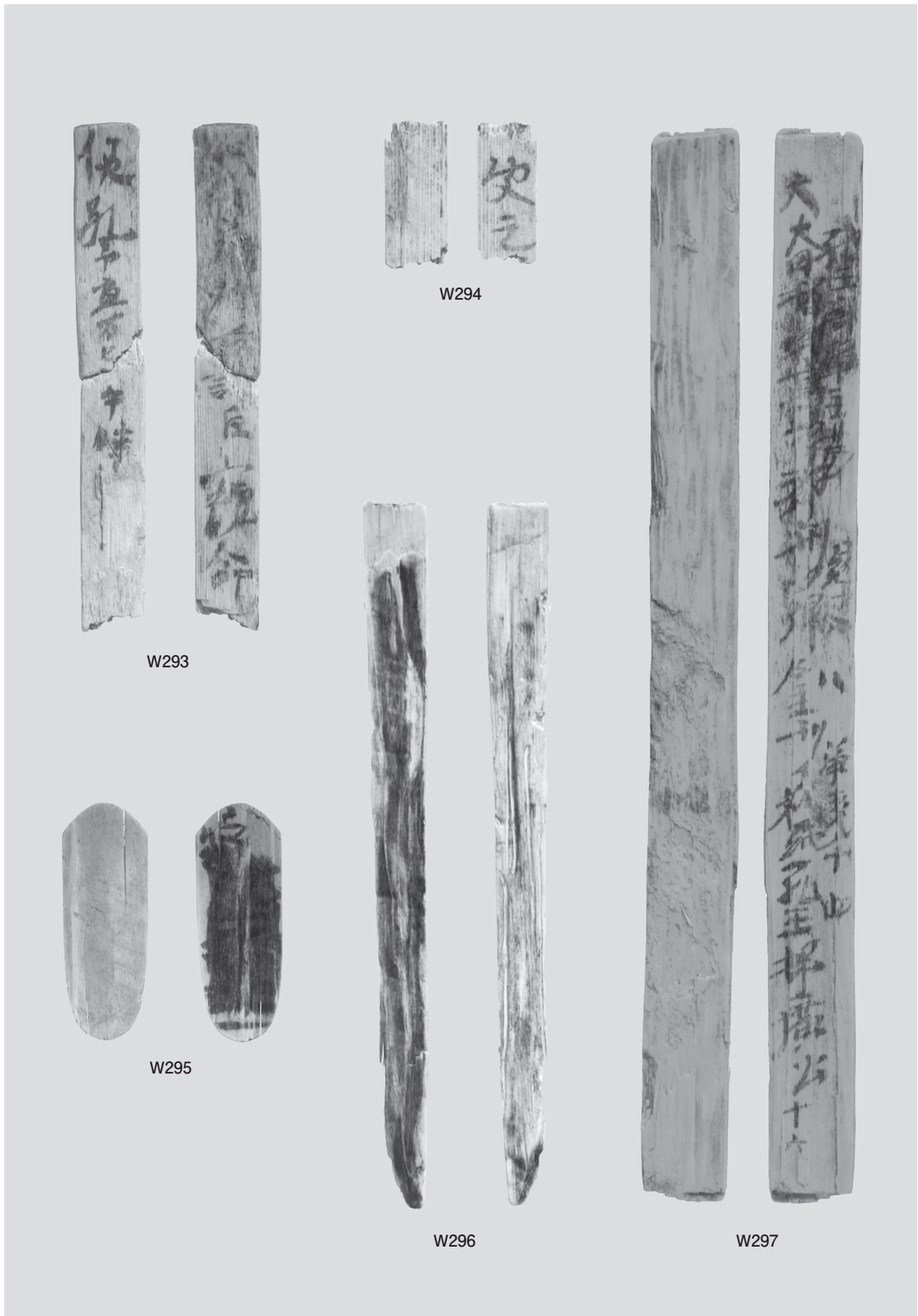
木簡 (1) (保存処理前)



木簡 (2) (保存処理前、赤外線写真)



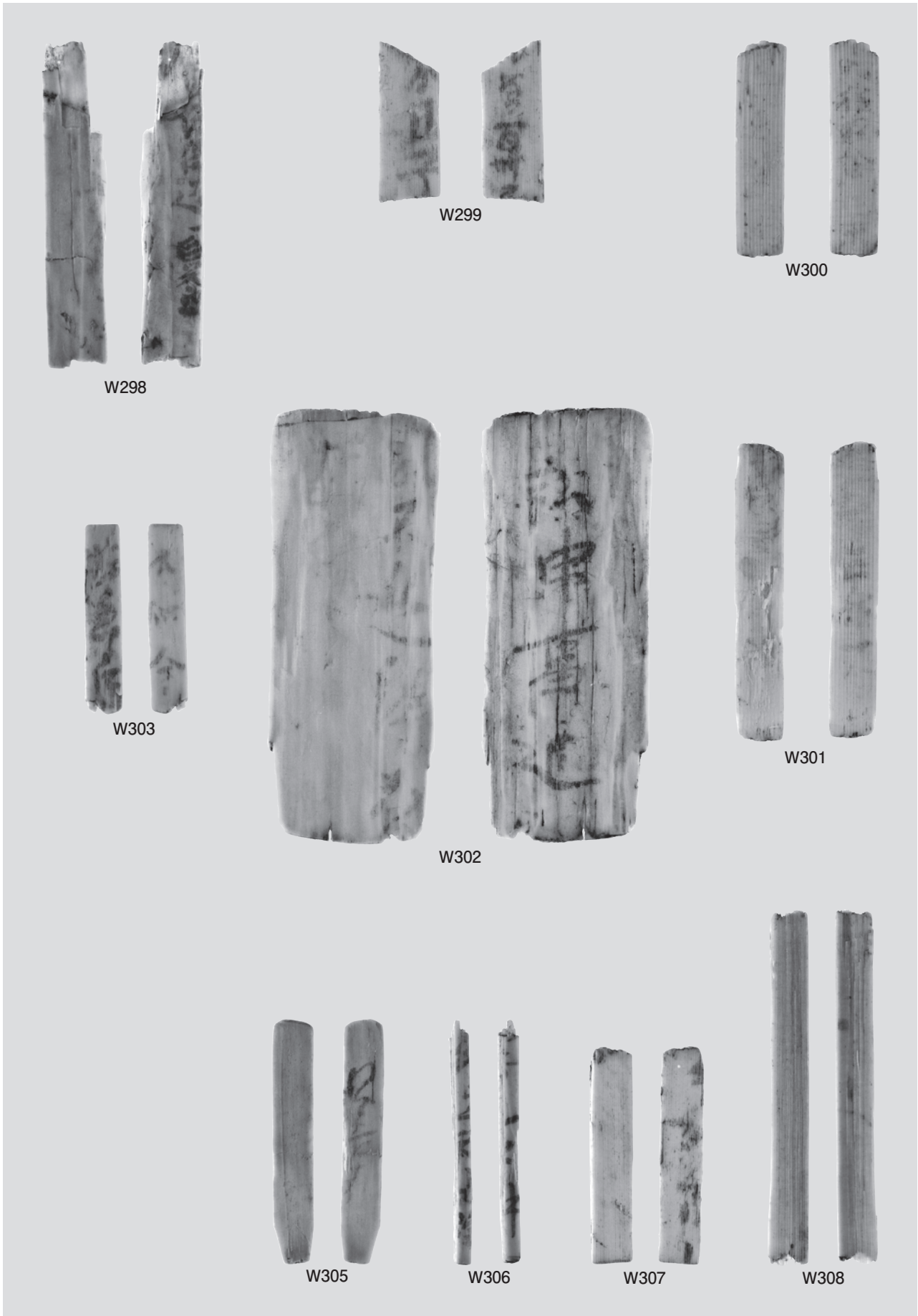
木簡 (3) (保存処理後)



木簡 (4) (保存処理後、赤外線写真)



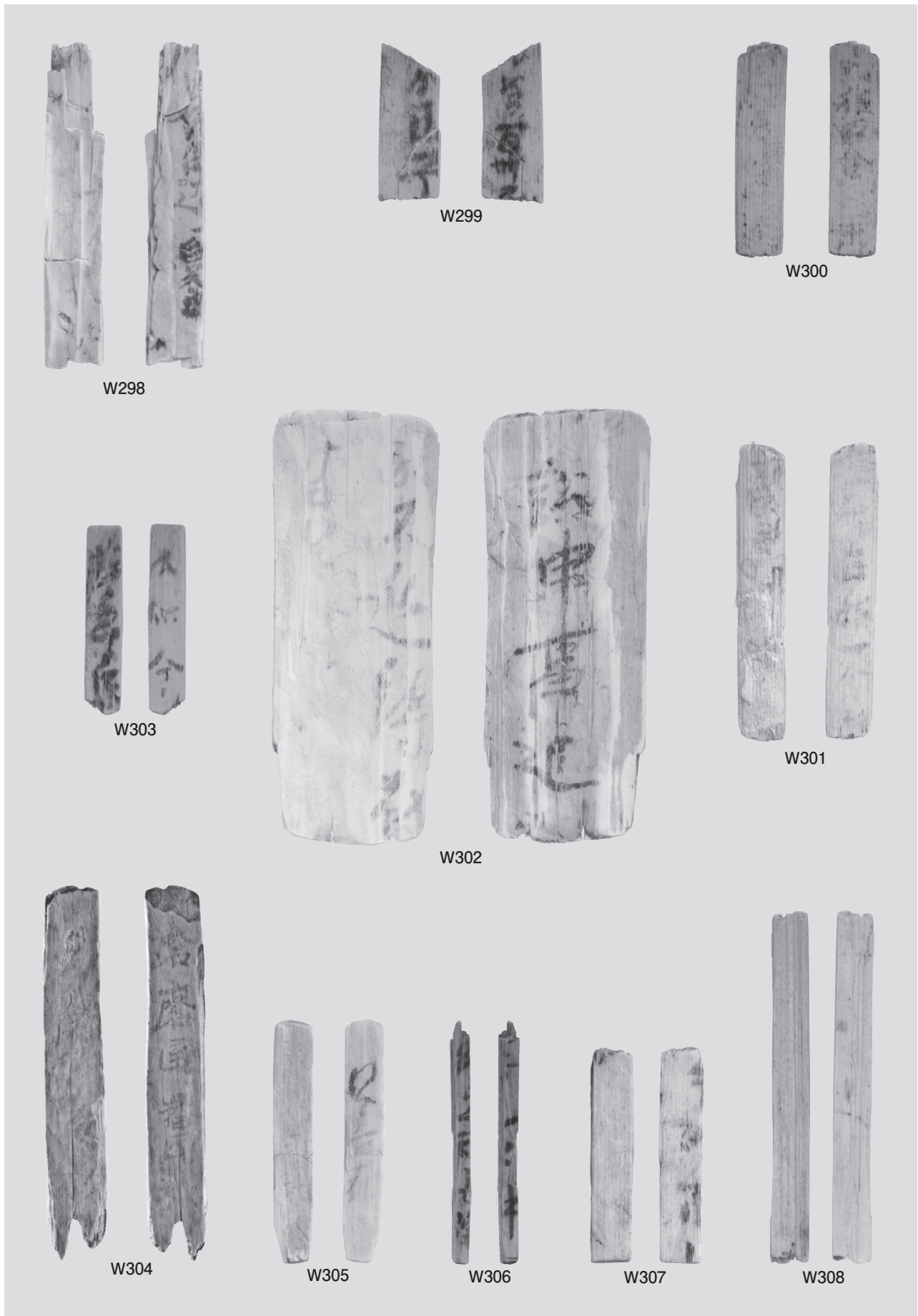
木簡 (5) (保存処理前)



木簡 (6) (保存処理前、赤外線写真)



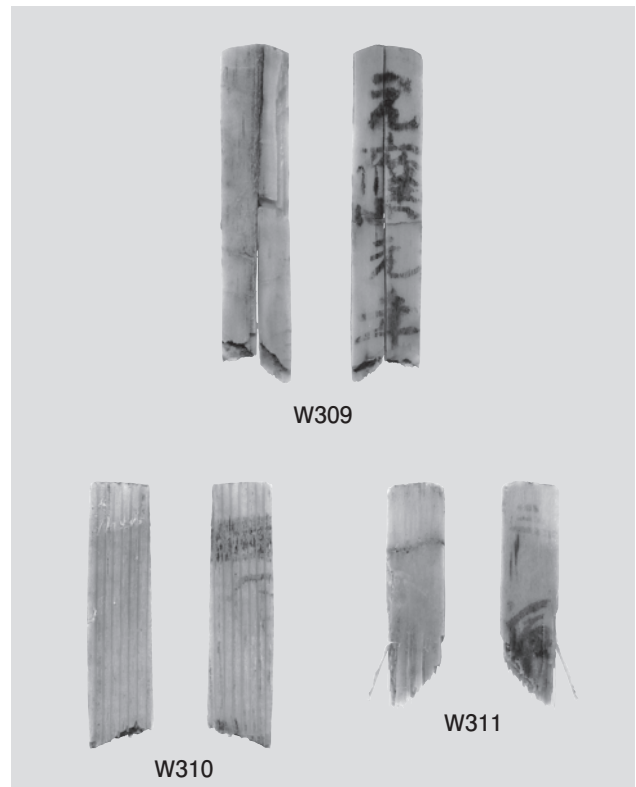
木簡 (7) (保存処理後)



木簡 (8) (保存処理後、赤外線写真)



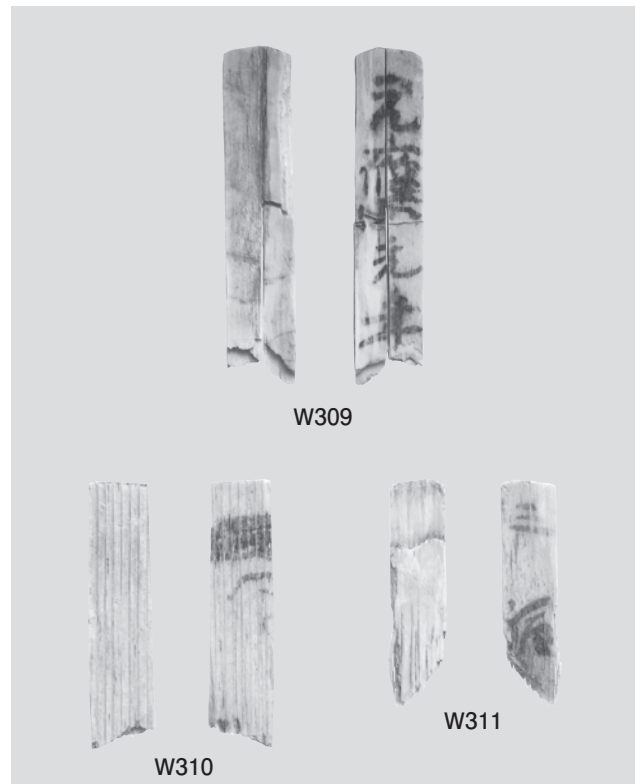
1 木簡 (9) (保存処理前)



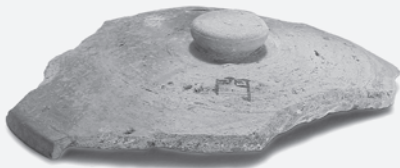
2 木簡 (10) (保存処理前、赤外線写真)



3 木簡 (11) (保存処理後)



4 木簡 (12) (保存処理後、赤外線写真)



1124



1125



1126



1128



1132



1133



1134



1137



1147



1150







1124



1125



1128



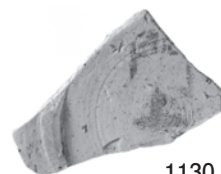
1126



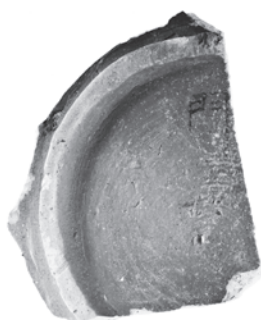
1129



1127



1130



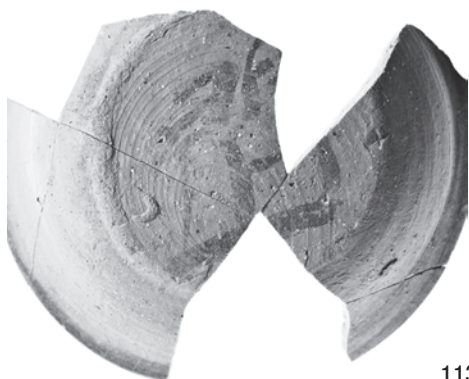
1131



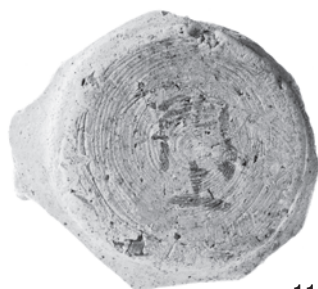
1132



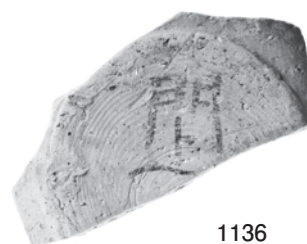
1133



1134



1135

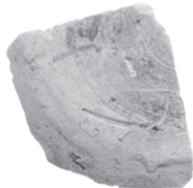


1136

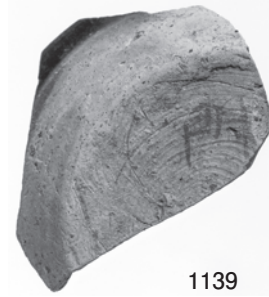
墨書土器 (1) 「門」 ① (赤外線写真)



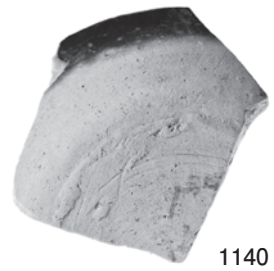
1137



1138



1139



1140



1141



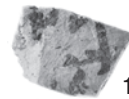
1142



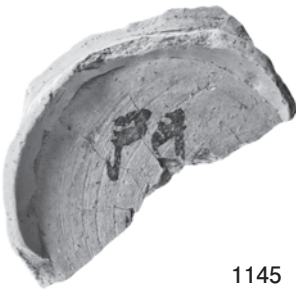
1143



1144



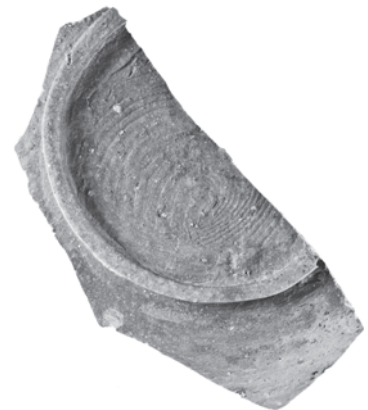
1146



1145



1147



1148



1149



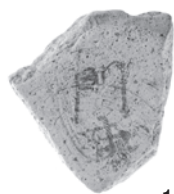
1151



1152



1150



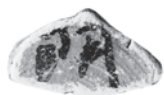
1153



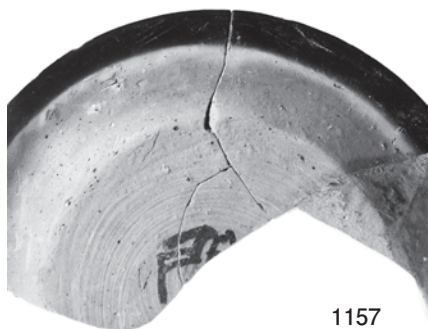
1154



1155



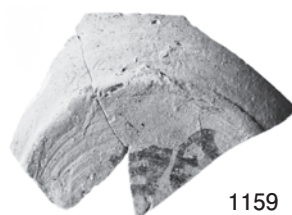
1164



1157



1156



1159



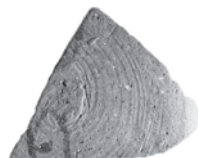
1160



1158



1165



1168



1166



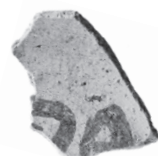
1161



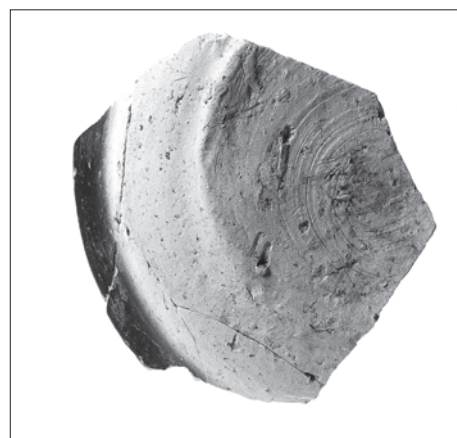
1162



1163



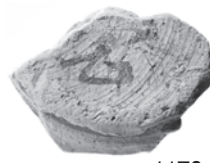
1167



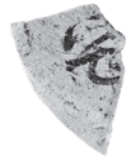
試掘調査出土墨書土器
(写真提供：鳥取市教育委員会)



1169



1170



1171



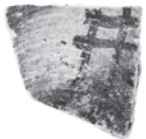
1174



1173



1172



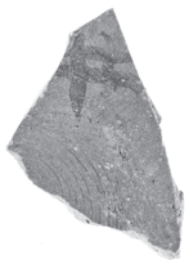
1178



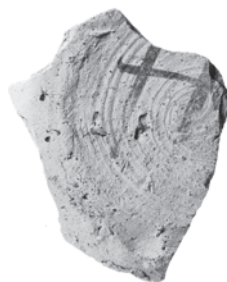
1179



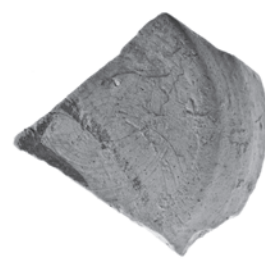
1175



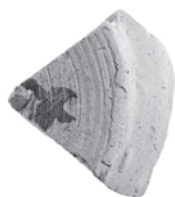
1176



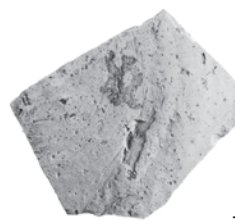
1177



1180

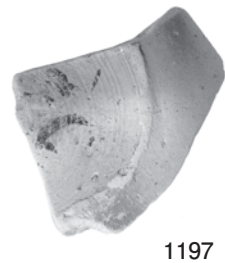
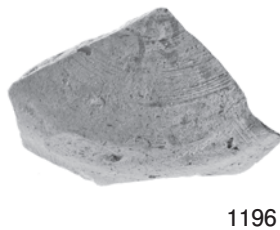
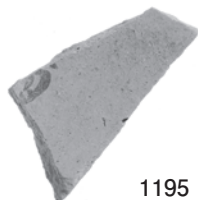
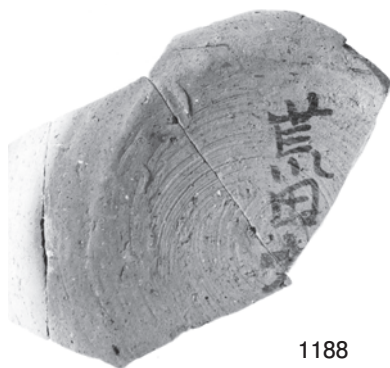
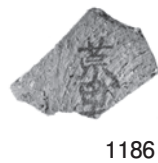
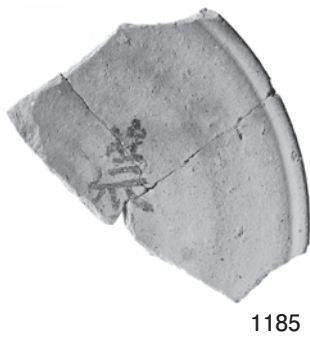
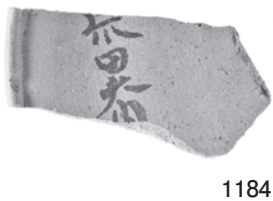
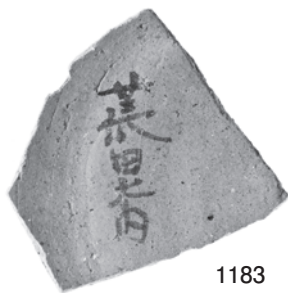


1181

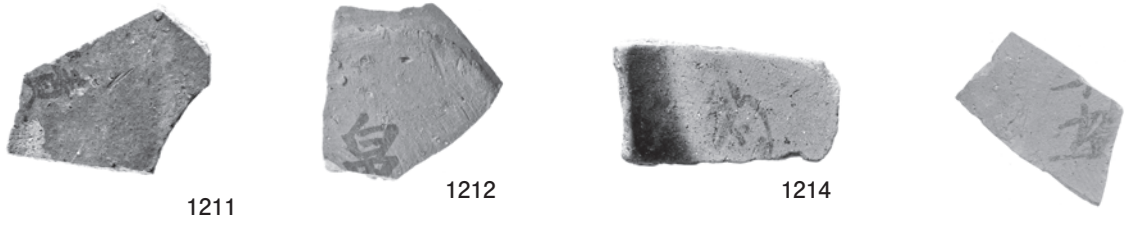
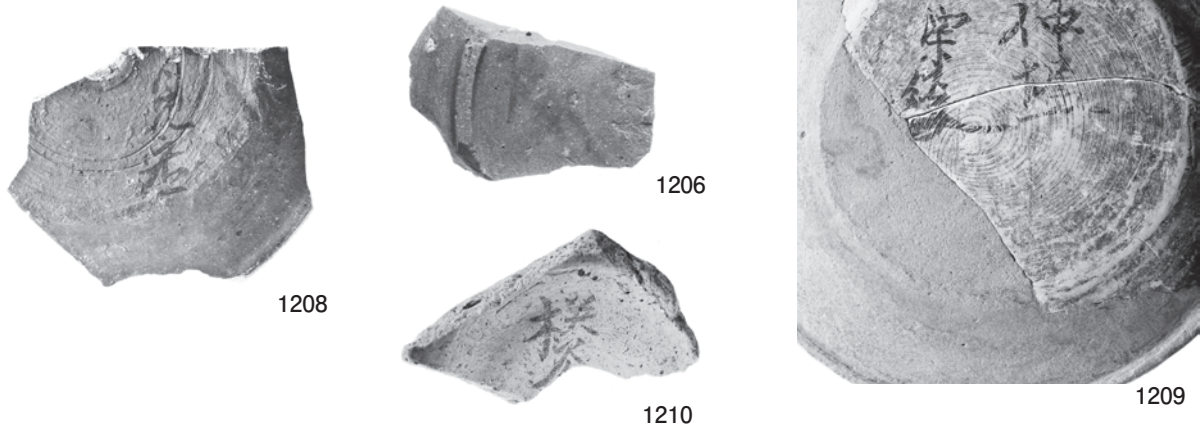
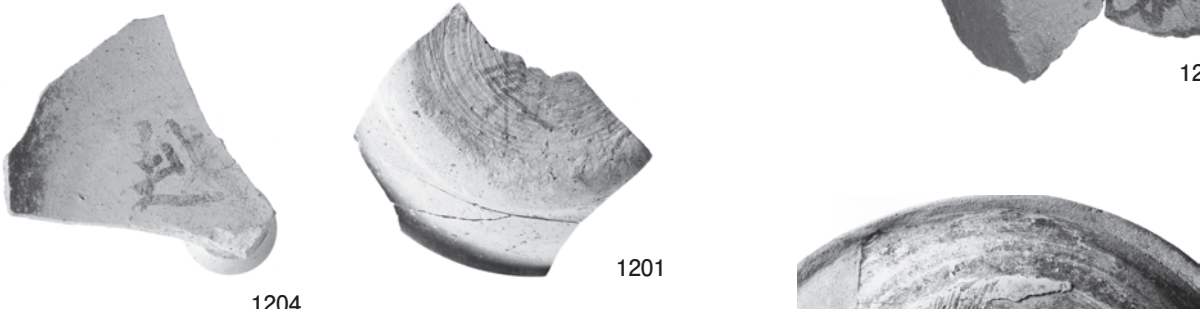
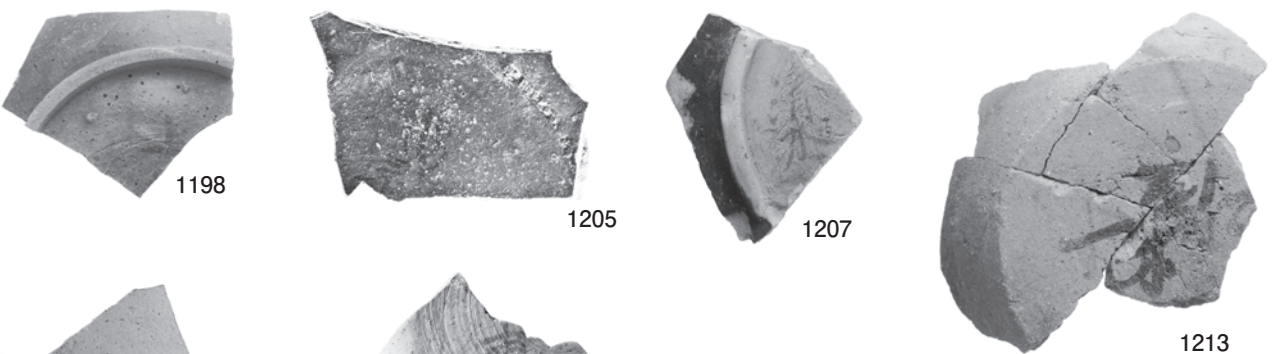
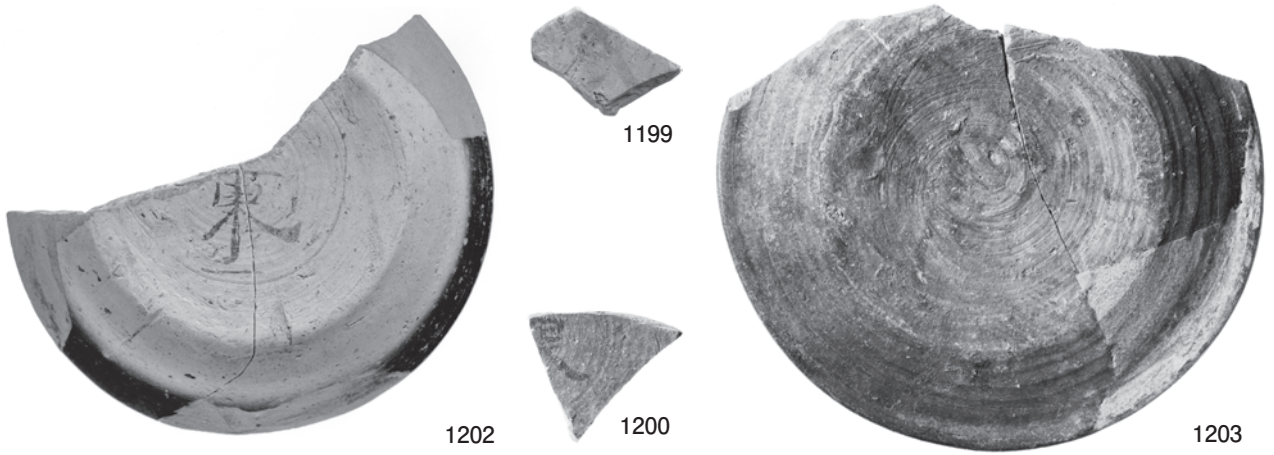


1182

墨書土器 (4) 「家」「宅」「井」 (赤外線写真)



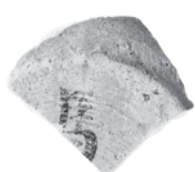
墨書土器 (5) 「荒田大内」「大内」「下内」ほか (赤外線写真)



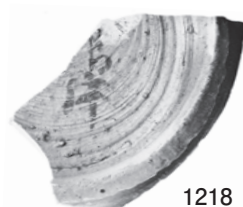
墨書土器 (6) 「東」「高郡」「石井」ほか (赤外線写真)



1216



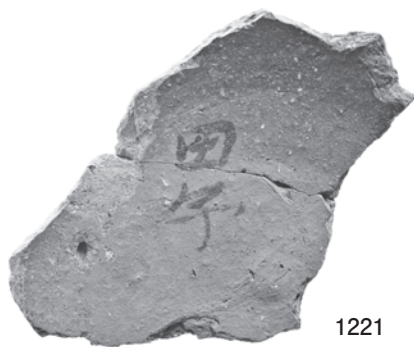
1217



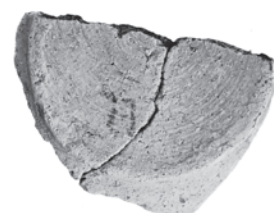
1218



1219



1221



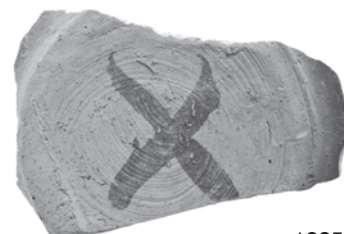
1223



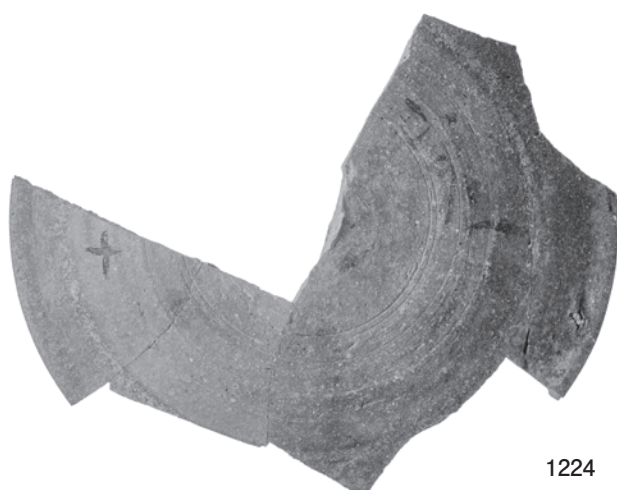
1220



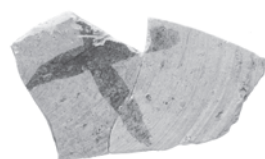
1222



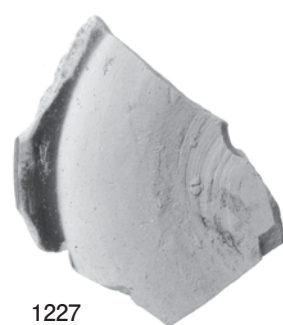
1225



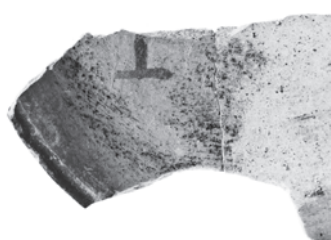
1224



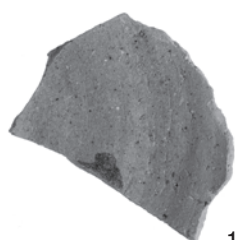
1226



1227



1228



1229



1230

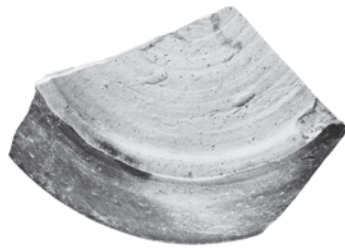


1231

墨書土器 (7) 「馬津」「津」「船」「今主」「田子」ほか (赤外線写真)



1232



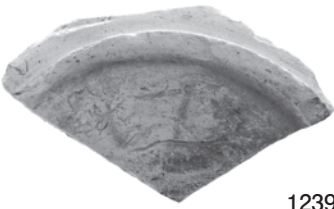
1233



1234



1236



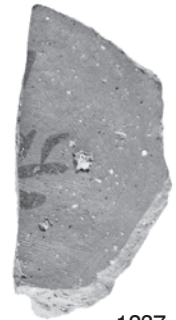
1239



1235



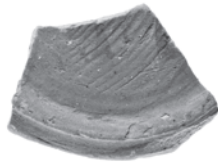
1238



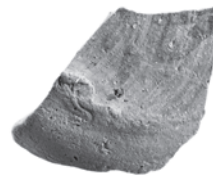
1237



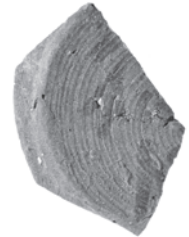
1242



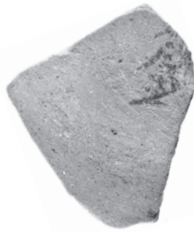
1240



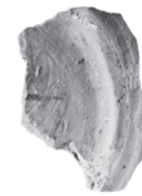
1244



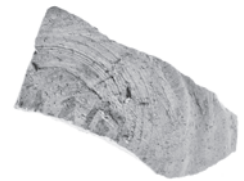
1245



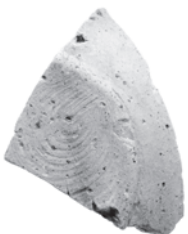
1243



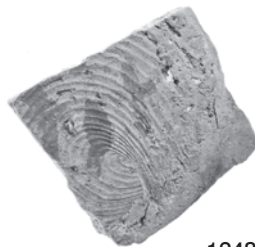
1241



1249



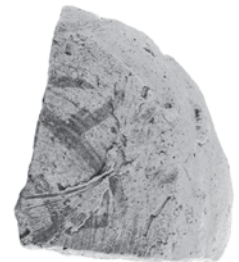
1246



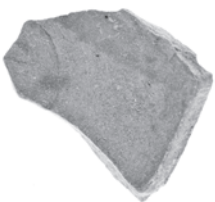
1248



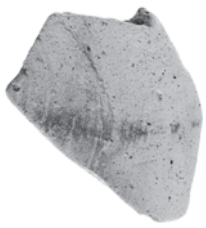
1250



1251



1247



1252



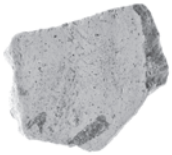
1253



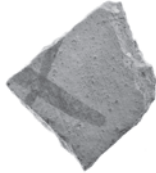
1254



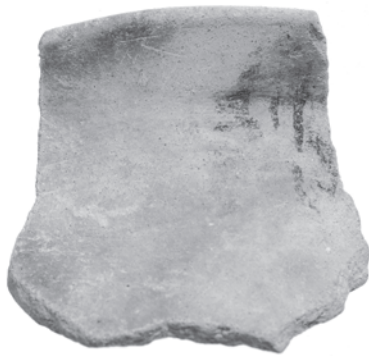
1255



1256



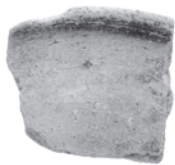
1257



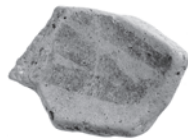
1265



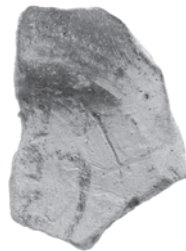
1260



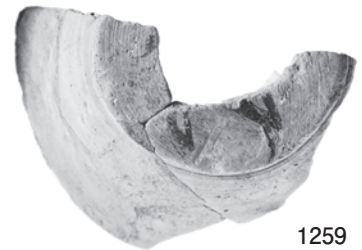
1258



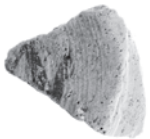
1262



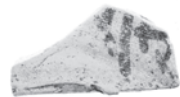
1264



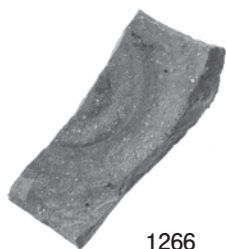
1259



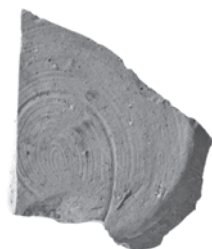
1261



1263



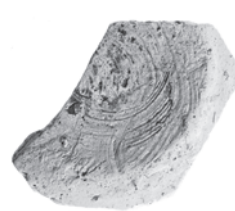
1266



1267



1268



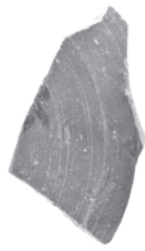
1269



1270



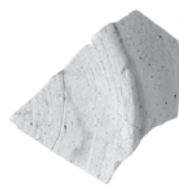
1271



1272



1273



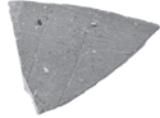
1274



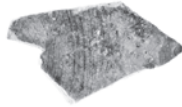
1275



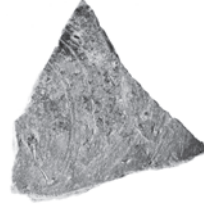
1276



1277



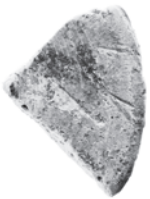
1278



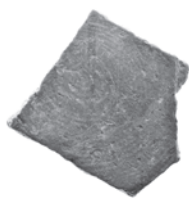
1279



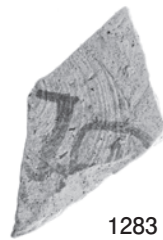
1280



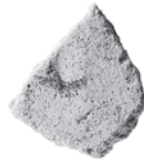
1281



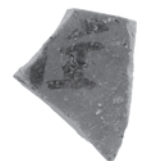
1282



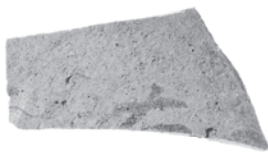
1283



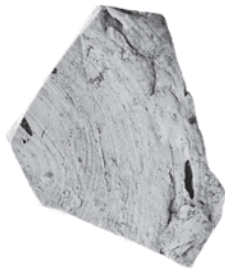
1286



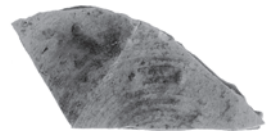
1287



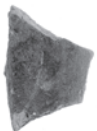
1284



1285



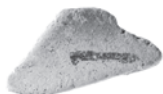
1289



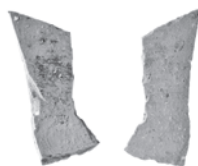
1288



1290



1291



1292

一般国道9号（鳥取西道路）の改築に伴う
埋蔵文化財発掘調査報告書XV

鳥取県鳥取市

良 田 平 田 遺 跡
第2分冊【写真図版編】

発 行 2014年12月19日
編 集 公益財団法人鳥取県教育文化財団調査室
発行者 鳥取県教育委員会
〒680-8570 鳥取県鳥取市東町一丁目271番地
電話 (0857) 26-7525
印 刷 勝美印刷株式会社
